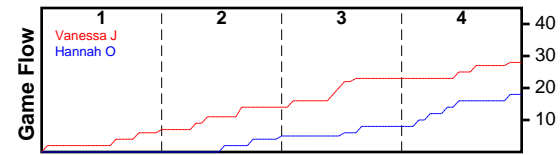


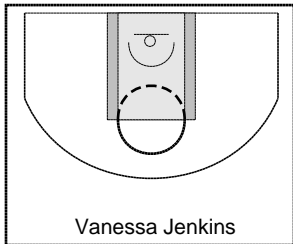
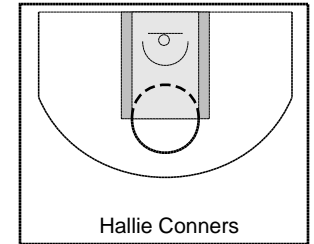
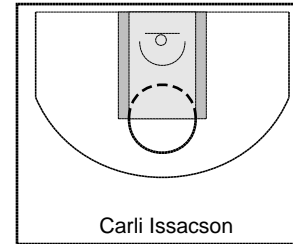
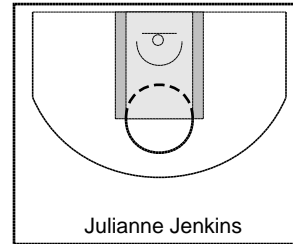
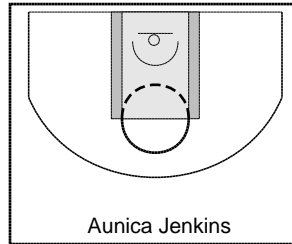
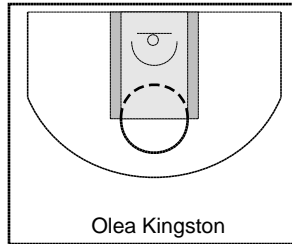
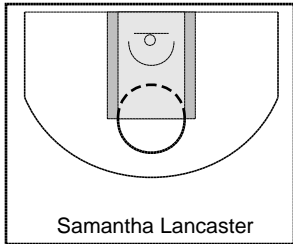
Vanessa J

1/15/24 Vanessa J at Hannah O

	1	2	3	4	T
Vanessa J	7	7	9	5	28
Hannah O	0	5	3	10	18



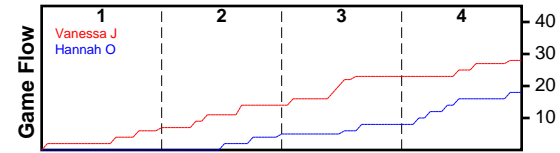
#	Name	G	MIN	FGM	FGA	FG%	2PM	2PA	2P%	3PM	3PA	3P%	FTM	FTA	FT%	OREB	DREB	REB	AST	STL	BLK	TO	PF	DEF	PTS
0	Samantha Lancaster	1	21	1	8	0.125	1	8	0.125	0	0	0.000	1	2	0.500	1	6	7	0	0	0	1	1	0	3
57	Olea Kingston	1	21	1	3	0.333	1	3	0.333	0	0	0.000	0	0	0.000	3	1	4	0	3	0	4	1	0	2
158	Aunica Jenkins	1	21	5	12	0.417	5	10	0.500	0	2	0.000	0	7	0.000	4	5	9	0	3	0	5	1	1	10
661	Julianne Jenkins	1	17	0	4	0.000	0	2	0.000	0	2	0.000	0	2	0.000	1	1	2	0	1	0	6	6	0	0
14	Carli Issacson	1	17	1	7	0.143	1	3	0.333	0	4	0.000	0	0	0.000	3	0	3	0	5	0	1	0	0	2
60	Hallie Conners	1	26	3	7	0.429	3	7	0.429	0	0	0.000	1	2	0.500	6	3	9	0	6	0	5	1	1	7
258	Vanessa Jenkins	1	19	1	8	0.125	1	6	0.167	0	2	0.000	2	6	0.333	3	1	4	0	0	0	6	2	1	4
TOTALS		1	28	12	49	0.245	12	39	0.308	0	10	0.000	4	19	0.211	21	17	38	0	18	0	28	12	3	28



Hannah O

1/15/24 Vanessa J at Hannah O

	1	2	3	4	T
Vanessa J	7	7	9	5	28
Hannah O	0	5	3	10	18



#	Name	G	MIN	FGM	FGA	FG%	2PM	2PA	2P%	3PM	3PA	3P%	FTM	FTA	FT%	OREB	DREB	REB	AST	STL	BLK	TO	PF	DEF	PTS
158	Mikki Crandal	1	9	0	3	0.000	0	2	0.000	0	1	0.000	0	0	0.000	1	1	2	0	0	0	1	0	0	0
181	Hannah Owen	1	7	0	1	0.000	0	1	0.000	0	0	0.000	0	0	0.000	0	0	0	0	0	0	0	0	0	0
96	Shirley Stoddard	1	28	0	6	0.000	0	6	0.000	0	0	0.000	0	0	0.000	6	7	13	0	5	0	3	2	3	0
135	Naonna O'brien	1	24	2	13	0.154	2	9	0.222	0	4	0.000	0	0	0.000	0	3	3	0	6	0	13	3	0	4
73	Minnie Weaver	1	22	0	7	0.000	0	6	0.000	0	1	0.000	2	4	0.500	3	2	5	0	1	0	5	2	2	2
0	Amanda Gustafson	1	25	2	7	0.286	2	7	0.286	0	0	0.000	1	4	0.250	5	3	8	0	6	0	5	6	1	5
90	Lucy Jenkins	1	28	3	11	0.273	3	7	0.429	0	4	0.000	1	4	0.250	1	1	2	0	1	0	4	1	0	7
TOTALS		1	28	7	48	0.146	7	38	0.184	0	10	0.000	4	12	0.333	16	17	33	0	19	0	31	14	6	18

