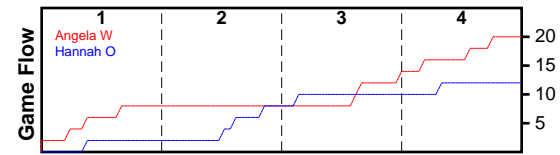


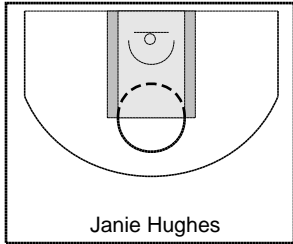
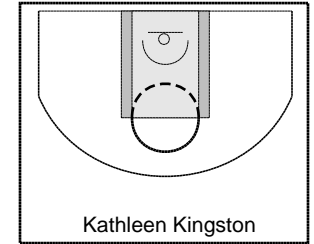
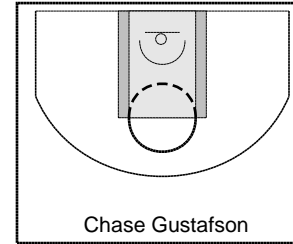
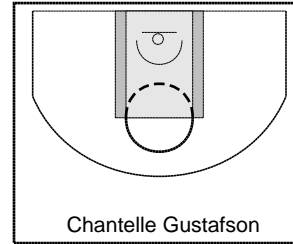
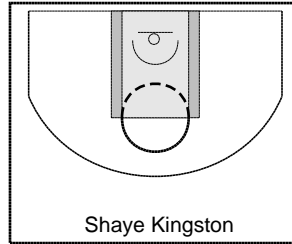
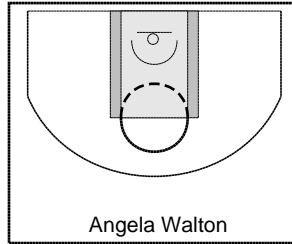
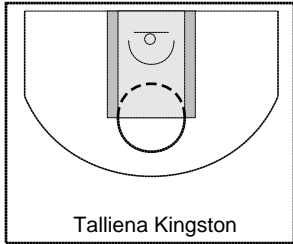
Angela W

2/19/24 Angela W at Hannah O

	1	2	3	4	T
Angela W	8	0	4	8	20
Hannah O	2	6	2	2	12



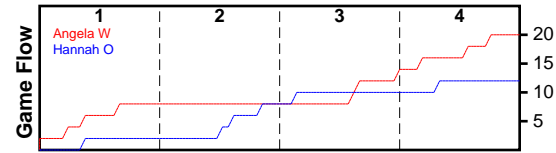
#	Name	G	MIN	FGM	FGA	FG%	2PM	2PA	2P%	3PM	3PA	3P%	FTM	FTA	FT%	OREB	DREB	REB	AST	STL	BLK	TO	PF	DEF	PTS
105	Talliena Kingston	1	28	2	9	0.222	2	9	0.222	0	0	0.000	0	0	0.000	9	4	13	0	0	0	3	0	0	4
0	Angela Walton	1	26	1	10	0.100	1	8	0.125	0	2	0.000	0	0	0.000	6	8	14	0	0	0	2	3	0	2
0	Shaye Kingston	1	20	1	13	0.077	1	12	0.083	0	1	0.000	0	2	0.000	3	1	4	0	0	2	1	0	0	2
272	Chantelle Gustafson	1	7	0	7	0.000	0	6	0.000	0	1	0.000	0	0	0.000	2	0	2	0	0	0	1	0	0	0
0	Chase Gustafson	1	17	0	2	0.000	0	2	0.000	0	0	0.000	0	2	0.000	2	4	6	0	0	1	1	0	0	0
0	Kathleen Kingston	1	16	2	9	0.222	2	8	0.250	0	1	0.000	0	0	0.000	8	1	9	0	0	0	2	0	0	4
97	Janie Hughes	1	28	4	12	0.333	4	8	0.500	0	4	0.000	0	0	0.000	2	7	9	0	0	1	3	0	0	8
TOTALS		1	28	10	62	0.161	10	53	0.189	0	9	0.000	0	4	0.000	32	25	57	0	0	4	13	3	0	20



Hannah O

2/19/24 Angela W at Hannah O

	1	2	3	4	T
Angela W	8	0	4	8	20
Hannah O	2	6	2	2	12



#	Name	G	MIN	FGM	FGA	FG%	2PM	2PA	2P%	3PM	3PA	3P%	FTM	FTA	FT%	OREB	DREB	REB	AST	STL	BLK	TO	PF	DEF	PTS
158	Mikki Crandal	1	28	0	13	0.000	0	13	0.000	0	0	0.000	0	0	0.000	6	4	10	0	0	0	3	1	0	0
181	Hannah Owen	1	28	2	6	0.333	2	5	0.400	0	1	0.000	0	0	0.000	1	1	2	0	0	0	0	0	0	4
96	Shirley Stoddard	1	28	1	7	0.143	1	6	0.167	0	1	0.000	0	0	0.000	6	4	10	0	0	0	2	0	0	2
135	Naconna O'brien	1	28	3	27	0.111	3	23	0.130	0	4	0.000	0	0	0.000	4	10	14	0	0	0	3	1	0	6
73	Minnie Weaver	0	0	0	0	0.000	0	0	0.000	0	0	0.000	0	0	0.000	0	0	0	0	0	0	0	0	0	0
0	Amanda Gustafson	1	28	0	1	0.000	0	1	0.000	0	0	0.000	0	0	0.000	5	1	6	0	0	1	2	1	0	0
90	Lucy Jenkins	0	0	0	0	0.000	0	0	0.000	0	0	0.000	0	0	0.000	0	0	0	0	0	0	0	0	0	0
TOTALS		1	28	6	54	0.111	6	48	0.125	0	6	0.000	0	0	0.000	22	20	42	0	0	1	10	3	0	12

