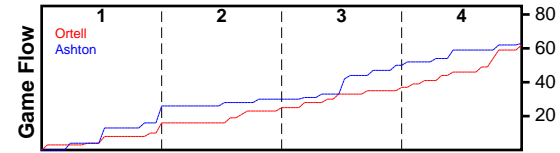


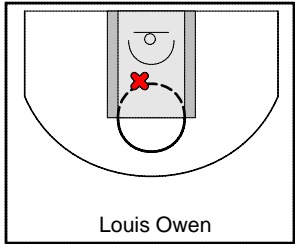
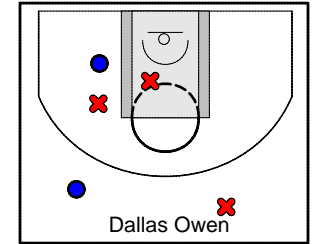
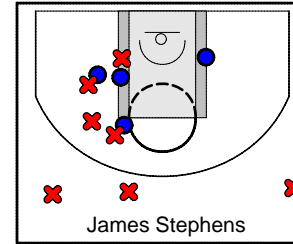
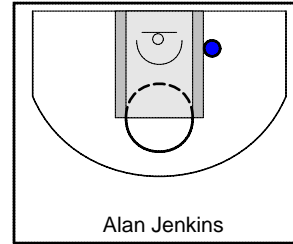
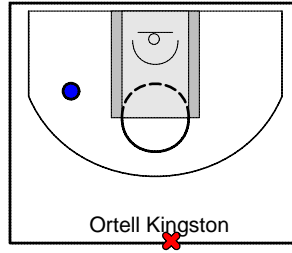
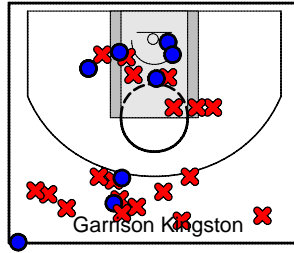
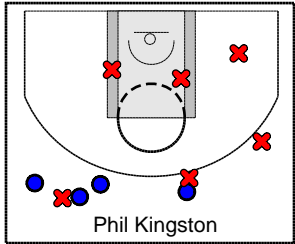
Ortell

9/18/24 Ortell at Ashton

	1	2	3	4	T
Ortell	16	7	12	27	62
Ashton	26	4	20	13	63



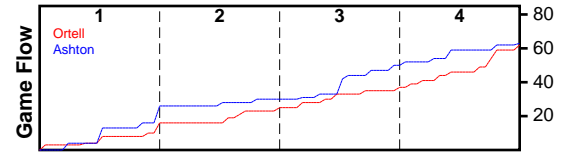
#	Name	G	MIN	FGM	FGA	FG%	2PM	2PA	2P%	3PM	3PA	3P%	FTM	FTA	FT%	OREB	DREB	REB	AST	STL	BLK	TO	PF	DEF	PTS
0	Phil Kingston	1	20	5	12	0.417	0	3	0.000	5	9	0.556	2	4	0.500	1	2	3	0	1	0	2	3	0	17
0	Garrison Kingston	1	22	9	34	0.265	5	15	0.333	4	19	0.211	3	4	0.750	5	7	12	2	1	1	2	1	0	25
0	Ortell Kingston	1	14	1	2	0.500	1	1	1.000	0	1	0.000	2	2	1.000	2	4	6	0	2	0	0	0	0	4
0	Alan Jenkins	1	5	1	1	1.000	1	1	1.000	0	0	0.000	0	0	0.000	0	1	1	0	0	0	0	0	0	2
0	James Stephens	1	22	4	16	0.250	4	11	0.364	0	5	0.000	1	1	1.000	8	5	13	6	6	0	3	2	0	9
0	Dallas Owen	1	18	2	5	0.400	1	2	0.500	1	3	0.333	0	0	0.000	0	2	2	1	1	0	3	3	0	5
0	Louis Owen	1	10	0	1	0.000	0	1	0.000	0	0	0.000	0	0	0.000	0	1	1	0	2	0	0	0	0	0
	TOTALS	1	28	22	71	0.310	12	34	0.353	10	37	0.270	8	11	0.727	16	22	38	9	13	1	10	9	0	62



Ashton

9/18/24 Ortell at Ashton

	1	2	3	4	T
Ortell	16	7	12	27	62
Ashton	26	4	20	13	63



#	Name	G	MIN	FGM	FGA	FG%	2PM	2PA	2P%	3PM	3PA	3P%	FTM	FTA	FT%	OREB	DREB	REB	AST	STL	BLK	TO	PF	DEF	PTS
0	Ryan Jenkins	0	0	0	0	0.000	0	0	0.000	0	0	0.000	0	0	0.000	0	0	0	0	0	0	0	0	0	0
0	Brayson Taylor	1	22	10	28	0.357	8	17	0.471	2	11	0.182	1	2	0.500	6	7	13	0	2	1	4	4	0	23
0	Charles Jenkins	0	0	0	0	0.000	0	0	0.000	0	0	0.000	0	0	0.000	0	0	0	0	0	0	0	0	0	0
0	Terrance Summers	1	22	1	5	0.200	0	3	0.000	1	2	0.500	0	0	0.000	3	2	5	4	2	2	1	1	0	3
0	Kale Jenkins	1	22	3	10	0.300	2	4	0.500	1	6	0.167	1	2	0.500	2	6	8	2	1	0	2	3	0	8
0	Ashton Kingston	1	22	8	18	0.444	4	7	0.571	4	11	0.364	5	8	0.625	3	8	11	2	2	0	4	2	0	25
0	Austin Jenkins	1	22	1	3	0.333	0	2	0.000	1	1	1.000	1	2	0.500	3	3	6	0	0	3	6	2	0	4
	TOTALS	1	28	23	64	0.359	14	33	0.424	9	31	0.290	8	14	0.571	17	26	43	8	7	6	17	12	0	63

