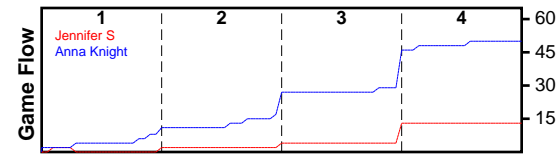


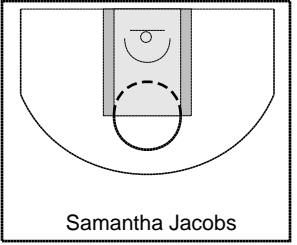
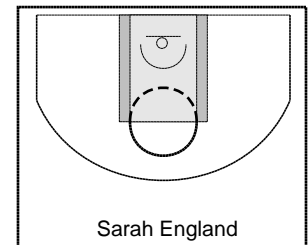
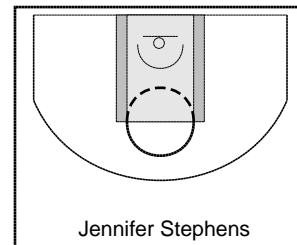
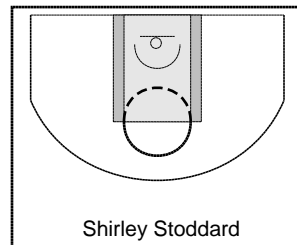
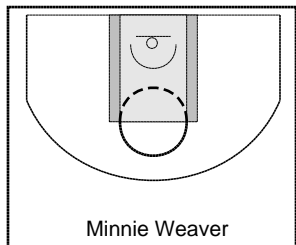
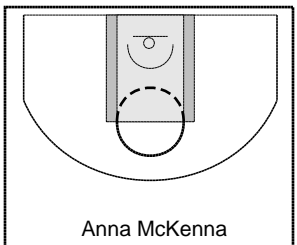
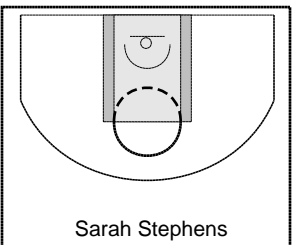
Jennifer S

3/18/25 Jennifer S at Anna Knight

	1	2	3	4	T
Jennifer S	2	2	9	0	13
Anna Knight	11	16	19	4	50



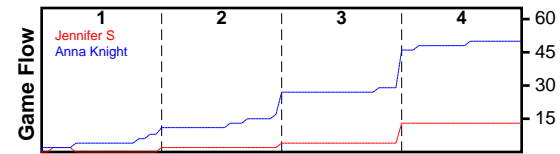
#	Name	G	MIN	FGM	FGA	FG%	2PM	2PA	2P%	3PM	3PA	3P%	FTM	FTA	FT%	OREB	DREB	REB	AST	STL	BLK	TO	PF	DEF	PTS
0	Sarah Stephens	1	23	0	3	0.000	0	3	0.000	0	0	0.000	0	0	0.000	1	3	4	0	2	0	10	1	0	0
0	Anna McKenna	1	28	1	11	0.091	1	9	0.111	0	2	0.000	3	7	0.429	3	7	10	0	7	1	6	0	1	5
0	Minnie Weaver	0	0	0	0	0.000	0	0	0.000	0	0	0.000	0	0	0.000	0	0	0	0	0	0	0	0	0	0
0	Shirley Stoddard	1	14	0	1	0.000	0	1	0.000	0	0	0.000	0	0	0.000	3	1	4	0	2	0	4	1	0	0
0	Jennifer Stephens	1	27	1	10	0.100	1	8	0.125	0	2	0.000	0	0	0.000	6	3	9	0	0	0	2	2	0	2
0	Sarah England	1	28	3	22	0.136	3	18	0.167	0	4	0.000	0	0	0.000	2	3	5	0	0	0	8	3	1	6
0	Samantha Jacobs	1	21	1	7	0.143	1	5	0.200	0	2	0.000	0	2	0.000	2	1	3	0	1	0	3	0	0	2
	TOTALS	1	28	6	54	0.111	6	44	0.136	0	10	0.000	3	9	0.333	17	18	35	0	12	1	33	7	2	15



Anna Knight

3/18/25 Jennifer S at Anna Knight

	1	2	3	4	T
Jennifer S	2	2	9	0	13
Anna Knight	11	16	19	4	50



#	Name	G	MIN	FGM	FGA	FG%	2PM	2PA	2P%	3PM	3PA	3P%	FTM	FTA	FT%	OREB	DREB	REB	AST	STL	BLK	TO	PF	DEF	PTS
0	Megan Young	1	28	5	12	0.417	5	12	0.417	0	0	0.000	4	6	0.667	10	12	22	1	11	5	4	0	1	14
0	Shaye Kingston	1	22	3	10	0.300	3	10	0.300	0	0	0.000	0	0	0.000	4	0	4	0	0	0	6	1	0	6
0	Levonica Stubbs	1	21	0	6	0.000	0	6	0.000	0	0	0.000	1	2	0.500	7	1	8	0	0	0	2	3	0	1
0	Naconna O'Brien	1	28	2	14	0.143	2	6	0.333	0	8	0.000	0	0	0.000	3	2	5	1	4	1	6	2	2	4
0	Anna Knight	1	28	8	27	0.296	3	10	0.300	5	17	0.294	0	0	0.000	2	10	12	1	7	2	6	1	1	21
0	Arized Gustafson	0	0	0	0	0.000	0	0	0.000	0	0	0.000	0	0	0.000	0	0	0	0	0	0	0	0	0	0
0	Elizabeth Hull	1	14	1	1	1.000	1	1	1.000	0	0	0.000	0	0	0.000	3	1	4	0	0	0	1	0	0	2
	TOTALS	1	28	19	70	0.271	14	45	0.311	5	25	0.200	5	8	0.625	29	26	55	3	22	8	25	7	4	48

