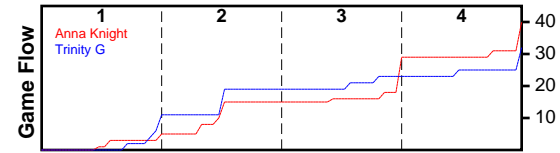


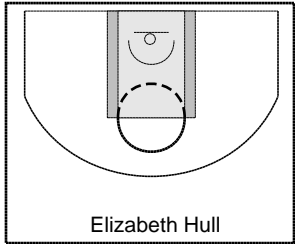
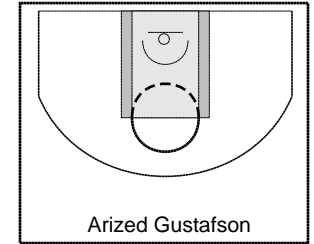
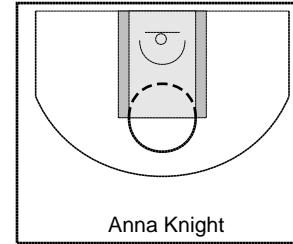
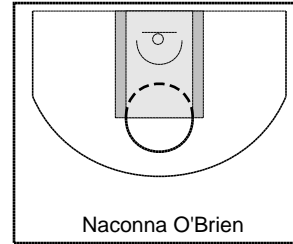
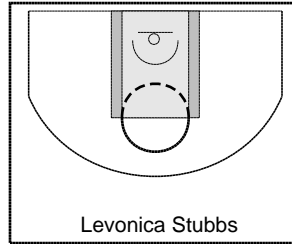
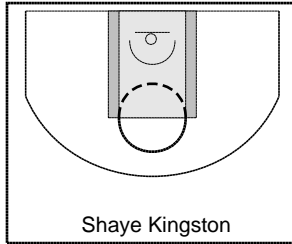
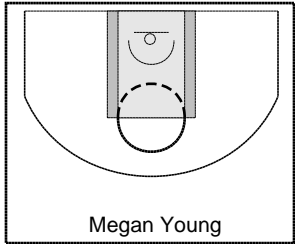
Anna Knight

3/25/25 Anna Knight at Trinity G

	1	2	3	4	T
Anna Knight	5	10	14	11	40
Trinity G	11	8	4	9	32



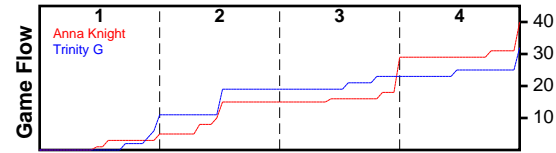
#	Name	G	MIN	FGM	FGA	FG%	2PM	2PA	2P%	3PM	3PA	3P%	FTM	FTA	FT%	OREB	DREB	REB	AST	STL	BLK	TO	PF	DEF	PTS
0	Megan Young	0	0	0	0	0.000	0	0	0.000	0	0	0.000	0	0	0.000	0	0	0	0	0	0	0	0	0	0
0	Shaye Kingston	1	28	2	5	0.400	2	5	0.400	0	0	0.000	1	4	0.250	1	0	1	0	0	1	5	2	0	5
0	Levonica Stubbs	1	18	4	8	0.500	4	8	0.500	0	0	0.000	0	0	0.000	6	1	7	0	0	0	0	1	0	8
0	Naconna O'Brien	1	28	2	15	0.133	2	10	0.200	0	5	0.000	0	0	0.000	3	7	10	0	0	0	3	3	0	4
0	Anna Knight	1	28	5	30	0.167	2	11	0.182	3	19	0.158	7	11	0.636	1	16	17	0	0	1	1	2	0	20
0	Arized Gustafson	1	28	1	4	0.250	0	2	0.000	1	2	0.500	0	0	0.000	2	1	3	0	0	0	1	0	0	3
0	Elizabeth Hull	1	11	0	3	0.000	0	3	0.000	0	0	0.000	1	2	0.500	5	0	5	0	0	0	0	2	0	1
	TOTALS	1	28	14	65	0.215	10	39	0.256	4	26	0.154	9	17	0.529	18	25	43	0	0	2	10	10	0	41



Trinity G

3/25/25 Anna Knight at Trinity G

	1	2	3	4	T
Anna Knight	5	10	14	11	40
Trinity G	11	8	4	9	32



#	Name	G	MIN	FGM	FGA	FG%	2PM	2PA	2P%	3PM	3PA	3P%	FTM	FTA	FT%	OREB	DREB	REB	AST	STL	BLK	TO	PF	DEF	PTS
0	Brynn Sanders	1	28	1	8	0.125	1	8	0.125	0	0	0.000	0	0	0.000	1	6	7	0	0	0	2	1	0	2
0	Carri Hughes	1	28	4	12	0.333	4	12	0.333	0	0	0.000	2	2	1.000	5	5	10	0	0	0	0	1	0	10
0	Hallie Connors	1	14	0	3	0.000	0	3	0.000	0	0	0.000	0	0	0.000	0	6	6	0	0	0	3	0	0	0
0	Adie Jenkins	1	28	6	22	0.273	4	10	0.400	2	12	0.167	1	1	1.000	1	7	8	0	0	2	4	4	0	15
0	Dawn Hayden	0	0	0	0	0.000	0	0	0.000	0	0	0.000	0	0	0.000	0	0	0	0	0	0	0	0	0	0
0	Lucy Jenkins	1	14	0	8	0.000	0	6	0.000	0	2	0.000	3	4	0.750	4	1	5	0	0	0	0	1	0	3
0	Trinity Grant	1	28	0	4	0.000	0	3	0.000	0	1	0.000	2	2	1.000	3	4	7	0	0	0	3	2	0	2
	TOTALS	1	28	11	57	0.193	9	42	0.214	2	15	0.133	8	9	0.889	14	29	43	0	0	2	12	9	0	32

