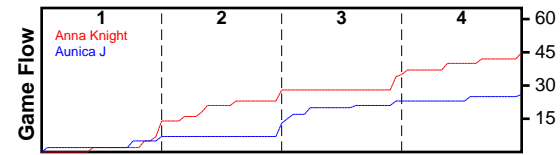


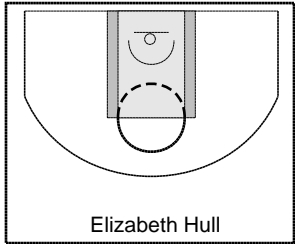
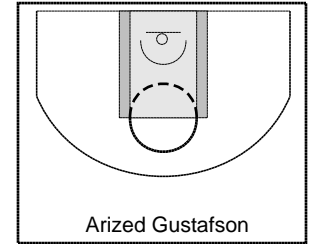
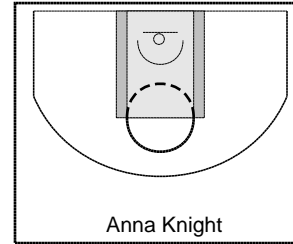
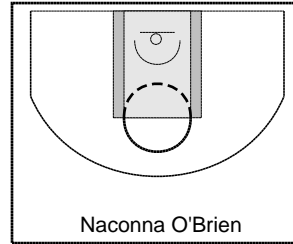
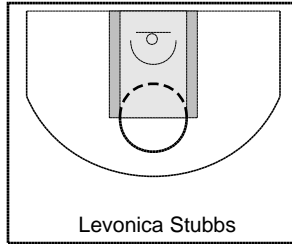
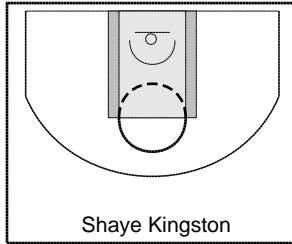
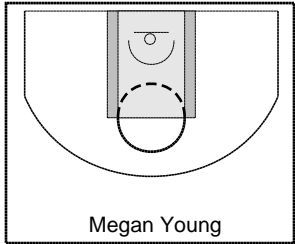
Anna Knight

2/18/25 Anna Knight at Aunica J

	1	2	3	4	T
Anna Knight	14	14	7	10	45
Aunica J	7	6	10	3	26



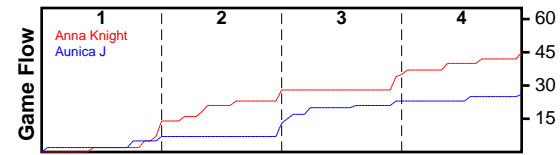
#	Name	G	MIN	FGM	FGA	FG%	2PM	2PA	2P%	3PM	3PA	3P%	FTM	FTA	FT%	OREB	DREB	REB	AST	STL	BLK	TO	PF	DEF	PTS
0	Megan Young	1	28	5	16	0.312	5	15	0.333	0	1	0.000	2	4	0.500	6	9	15	0	9	2	5	3	0	12
0	Shaye Kingston	1	18	2	7	0.286	1	2	0.500	1	5	0.200	0	0	0.000	0	1	1	0	3	0	5	1	0	5
0	Levonica Stubbs	0	0	0	0	0.000	0	0	0.000	0	0	0.000	0	0	0.000	0	0	0	0	0	0	0	0	0	0
0	Naconna O'Brien	1	28	4	10	0.400	3	8	0.375	1	2	0.500	1	3	0.333	0	5	5	0	3	1	9	1	0	10
0	Anna Knight	1	28	5	14	0.357	1	2	0.500	4	12	0.333	0	0	0.000	1	9	10	0	3	1	7	2	0	14
0	Arized Gustafson	1	14	2	7	0.286	2	6	0.333	0	1	0.000	0	0	0.000	0	0	0	0	0	0	0	1	0	4
0	Elizabeth Hull	1	26	0	1	0.000	0	1	0.000	0	0	0.000	0	2	0.000	1	1	2	0	1	0	1	0	0	0
	TOTALS	1	28	18	55	0.327	12	34	0.353	6	21	0.286	3	9	0.333	8	25	33	0	19	4	27	8	0	45



Aunica J

2/18/25 Anna Knight at Aunica J

	1	2	3	4	T
Anna Knight	14	14	7	10	45
Aunica J	7	6	10	3	26



#	Name	G	MIN	FGM	FGA	FG%	2PM	2PA	2P%	3PM	3PA	3P%	FTM	FTA	FT%	OREB	DREB	REB	AST	STL	BLK	TO	PF	DEF	PTS
0	Aunica Jenkins	1	28	7	20	0.350	6	14	0.429	1	6	0.167	3	6	0.500	2	7	9	0	1	3	10	3	0	18
0	Aspen Jenkins	1	10	0	2	0.000	0	2	0.000	0	0	0.000	0	0	0.000	3	0	3	0	0	1	2	0	0	0
0	Amanda Gustafson	1	28	1	6	0.167	1	6	0.167	0	0	0.000	0	2	0.000	5	3	8	0	2	0	5	2	0	2
0	Vanessa Jenkins	1	13	0	5	0.000	0	5	0.000	0	0	0.000	0	0	0.000	2	3	5	0	2	0	1	1	0	0
0	Ali Sessions	1	25	1	8	0.125	1	4	0.250	0	4	0.000	0	0	0.000	1	4	5	0	2	1	6	4	0	2
0	Leighton Tucker	1	10	1	1	1.000	0	0	0.000	1	1	1.000	0	0	0.000	0	1	1	0	3	0	2	0	0	3
0	Kathleen Kingston	1	28	0	11	0.000	0	10	0.000	0	1	0.000	1	6	0.167	5	7	12	0	3	1	9	3	0	1
	TOTALS	1	28	10	53	0.189	8	41	0.195	2	12	0.167	4	14	0.286	18	25	43	0	13	6	35	13	0	26

