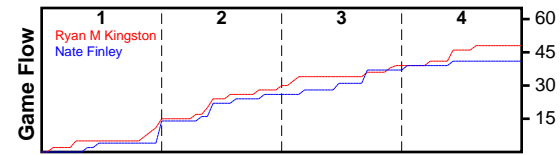


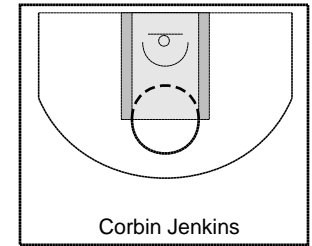
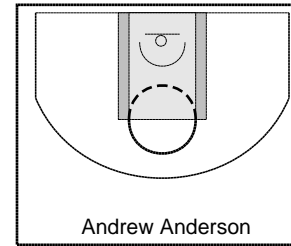
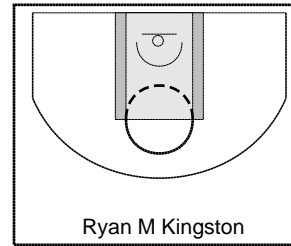
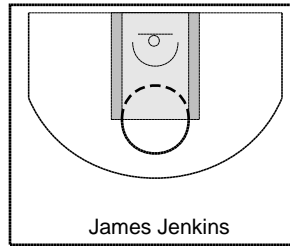
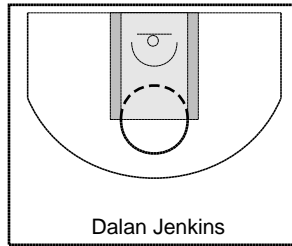
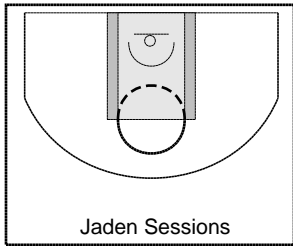
Ryan M Kingston

10/21/24 Ryan M Kingston at Nate Finley

	1	2	3	4	T
Ryan M Kingston	15	13	11	9	48
Nate Finley	12	14	11	4	41



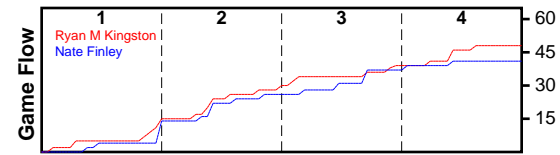
#	Name	G	MIN	FGM	FGA	FG%	2PM	2PA	2P%	3PM	3PA	3P%	FTM	FTA	FT%	OREB	DREB	REB	AST	STL	BLK	TO	PF	DEF	PTS
0	Jaden Sessions	1	21	3	5	0.600	3	5	0.600	0	0	0.000	0	0	0.000	3	3	6	0	1	0	3	2	0	6
0	Dalan Jenkins	1	28	5	14	0.357	5	13	0.385	0	1	0.000	2	6	0.333	2	8	10	0	1	0	6	4	0	12
0	James Jenkins	1	28	6	12	0.500	6	12	0.500	0	0	0.000	0	2	0.000	1	0	1	0	1	0	4	1	0	12
0	Ryan M Kingston	1	17	1	1	1.000	1	1	1.000	0	0	0.000	0	0	0.000	0	0	0	0	1	0	2	2	0	2
0	Andrew Anderson	0	0	0	0	0.000	0	0	0.000	0	0	0.000	0	0	0.000	0	0	0	0	0	0	0	0	0	0
0	Corbin Jenkins	1	19	7	11	0.636	5	8	0.625	2	3	0.667	0	2	0.000	1	3	4	0	3	0	2	6	0	16
	TOTALS	1	28	22	43	0.512	20	39	0.513	2	4	0.500	2	10	0.200	7	14	21	0	7	0	17	15	0	48



Nate Finley

10/21/24 Ryan M Kingston at Nate Finley

	1	2	3	4	T
Ryan M Kingston	15	13	11	9	48
Nate Finley	12	14	11	4	41



#	Name	G	MIN	FGM	FGA	FG%	2PM	2PA	2P%	3PM	3PA	3P%	FTM	FTA	FT%	OREB	DREB	REB	AST	STL	BLK	TO	PF	DEF	PTS
0	Daniel West	0	0	0	0	0.000	0	0	0.000	0	0	0.000	0	0	0.000	0	0	0	0	0	0	0	0	0	0
0	Nate Gustafson	1	28	6	14	0.429	5	9	0.556	1	5	0.200	0	0	0.000	4	5	9	0	2	0	12	6	0	13
0	Joshua Kendrick	1	18	0	0	0.000	0	0	0.000	0	0	0.000	0	0	0.000	2	1	3	0	0	0	2	1	0	0
0	Locklynne Mattingly	1	28	6	17	0.353	6	11	0.545	0	6	0.000	8	8	1.000	3	3	6	0	0	0	5	5	0	20
0	Nate Finley	0	0	0	0	0.000	0	0	0.000	0	0	0.000	0	0	0.000	0	0	0	0	0	0	0	0	0	0
0	Louis Gustafson	1	28	3	11	0.273	3	10	0.300	0	1	0.000	0	2	0.000	1	3	4	0	2	0	3	1	0	6
	TOTALS	1	28	15	42	0.357	14	30	0.467	1	12	0.083	8	10	0.800	10	12	22	0	4	0	22	13	0	39

