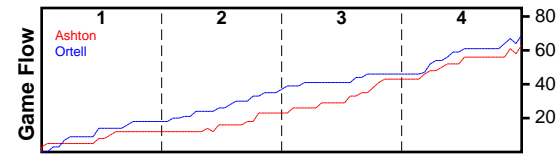


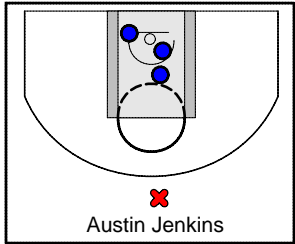
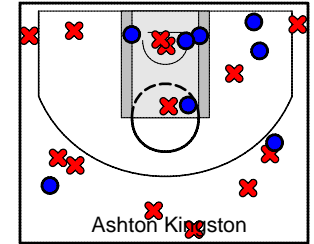
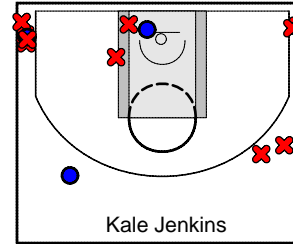
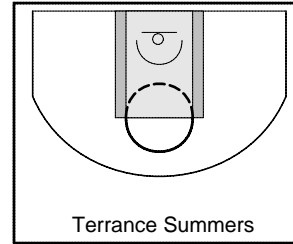
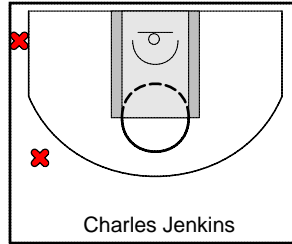
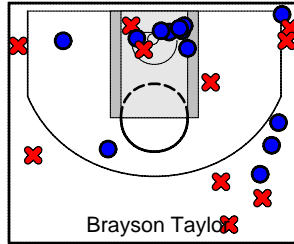
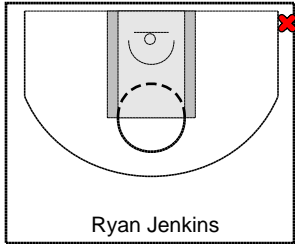
Ashton

10/16/24 Ashton at Ortell

	1	2	3	4	T
Ashton	12	11	20	20	63
Ortell	18	17	11	23	69



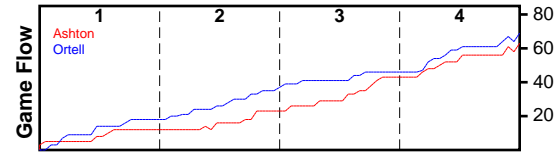
#	Name	G	MIN	FGM	FGA	FG%	2PM	2PA	2P%	3PM	3PA	3P%	FTM	FTA	FT%	OREB	DREB	REB	AST	STL	BLK	TO	PF	DEF	PTS
0	Ryan Jenkins	1	25	0	1	0.000	0	0	0.000	0	1	0.000	0	0	0.000	0	6	6	4	2	0	0	3	0	0
0	Brayson Taylor	1	29	12	22	0.545	8	11	0.727	4	11	0.364	3	5	0.600	1	10	11	2	4	1	7	3	0	31
0	Charles Jenkins	1	11	0	2	0.000	0	0	0.000	0	2	0.000	0	0	0.000	0	1	1	0	1	0	2	0	0	0
0	Terrance Summers	0	0	0	0	0.000	0	0	0.000	0	0	0.000	0	0	0.000	0	0	0	0	0	0	0	0	0	0
0	Kale Jenkins	1	29	3	13	0.231	1	3	0.333	2	10	0.200	0	0	0.000	1	3	4	1	1	0	1	3	0	8
0	Ashton Kingston	1	29	7	22	0.318	5	12	0.417	2	10	0.200	1	2	0.500	4	4	8	6	2	1	1	3	0	17
0	Austin Jenkins	1	22	3	4	0.750	3	3	1.000	0	1	0.000	1	2	0.500	0	3	3	0	0	0	0	3	0	7
	TOTALS	1	28	25	64	0.391	17	29	0.586	8	35	0.229	5	9	0.556	6	27	33	13	10	2	11	15	0	63



Ortell

10/16/24 Ashton at Ortell

	1	2	3	4	T
Ashton	12	11	20	20	63
Ortell	18	17	11	23	69



#	Name	G	MIN	FGM	FGA	FG%	2PM	2PA	2P%	3PM	3PA	3P%	FTM	FTA	FT%	OREB	DREB	REB	AST	STL	BLK	TO	PF	DEF	PTS
0	Phil Kingston	1	29	4	11	0.364	2	4	0.500	2	7	0.286	4	4	1.000	0	4	4	1	1	0	2	0	0	14
0	Garrison Kingston	1	25	7	16	0.438	4	6	0.667	3	10	0.300	6	7	0.857	1	4	5	1	1	0	3	0	0	23
0	Ortell Kingston	1	22	0	2	0.000	0	2	0.000	0	0	0.000	0	0	0.000	1	7	8	0	1	0	1	0	0	0
0	Alan Jenkins	1	7	0	0	0.000	0	0	0.000	0	0	0.000	0	0	0.000	1	0	1	0	0	0	0	0	0	0
0	James Stephens	1	26	5	12	0.417	3	6	0.500	2	6	0.333	5	7	0.714	4	8	12	2	0	0	4	2	0	17
0	Dallas Owen	1	28	5	14	0.357	5	11	0.455	0	3	0.000	1	2	0.500	1	8	9	4	3	0	3	1	0	11
0	Louis Owen	1	7	2	2	1.000	2	2	1.000	0	0	0.000	0	0	0.000	0	0	0	1	0	1	1	1	0	4
	TOTALS	1	28	23	57	0.404	16	31	0.516	7	26	0.269	16	20	0.800	8	31	39	9	6	1	14	4	0	69

