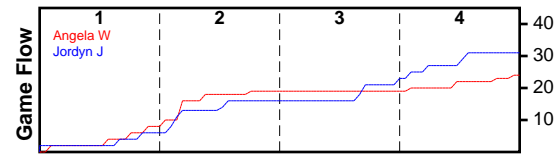


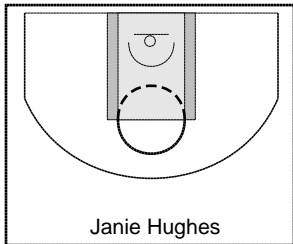
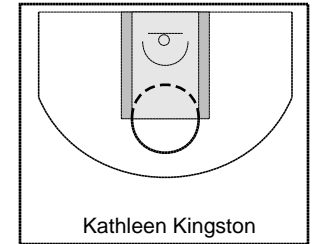
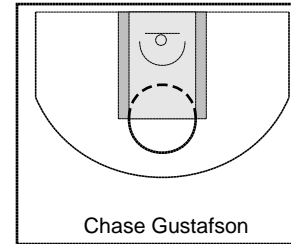
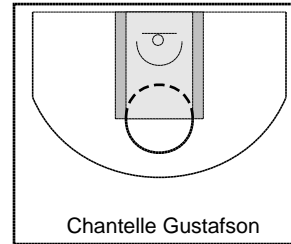
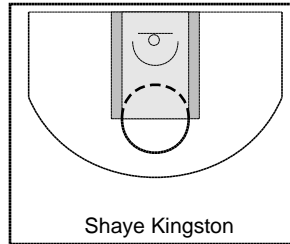
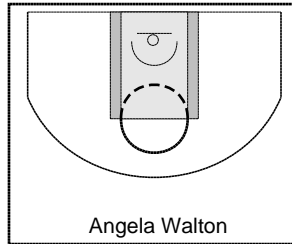
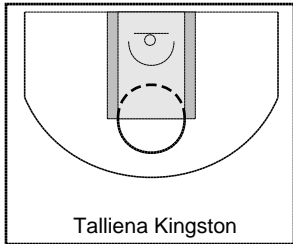
Angela W

3/11/24 Angela W at Jordyn J

	1	2	3	4	T
Angela W	8	11	0	5	24
Jordyn J	6	10	5	10	31



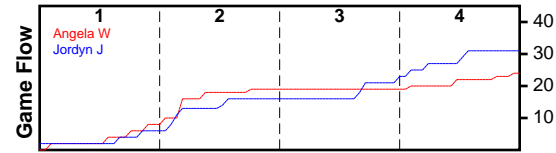
#	Name	G	MIN	FGM	FGA	FG%	2PM	2PA	2P%	3PM	3PA	3P%	FTM	FTA	FT%	OREB	DREB	REB	AST	STL	BLK	TO	PF	DEF	PTS
105	Talliena Kingston	1	28	1	9	0.111	1	7	0.143	0	2	0.000	2	3	0.667	3	4	7	0	1	0	5	0	1	4
0	Angela Walton	1	14	0	5	0.000	0	4	0.000	0	1	0.000	0	0	0.000	3	1	4	0	0	0	1	1	0	0
0	Shaye Kingston	1	15	0	2	0.000	0	2	0.000	0	0	0.000	0	0	0.000	1	2	3	0	0	0	3	2	0	0
272	Chantelle Gustafson	1	10	0	2	0.000	0	1	0.000	0	1	0.000	0	0	0.000	1	1	2	0	0	0	1	0	0	0
0	Chase Gustafson	1	24	0	1	0.000	0	1	0.000	0	0	0.000	0	0	0.000	3	0	3	0	3	0	1	1	0	0
0	Kathleen Kingston	1	24	3	10	0.300	3	10	0.300	0	0	0.000	1	2	0.500	5	8	13	0	3	2	6	4	0	7
97	Janie Hughes	1	27	6	18	0.333	6	16	0.375	0	2	0.000	1	6	0.167	8	4	12	0	1	1	2	0	1	13
TOTALS		1	28	10	47	0.213	10	41	0.244	0	6	0.000	4	11	0.364	24	20	44	0	8	3	19	8	2	24



Jordyn J

3/11/24 Angela W at Jordyn J

	1	2	3	4	T
Angela W	8	11	0	5	24
Jordyn J	6	10	5	10	31



#	Name	G	MIN	FGM	FGA	FG%	2PM	2PA	2P%	3PM	3PA	3P%	FTM	FTA	FT%	OREB	DREB	REB	AST	STL	BLK	TO	PF	DEF	PTS
0	Brynn Sanders	0	0	0	0	0.000	0	0	0.000	0	0	0.000	0	0	0.000	0	0	0	0	0	0	0	0	0	0
0	Jordyn Jenkins	1	28	5	24	0.208	4	20	0.200	1	4	0.250	0	0	0.000	4	5	9	0	2	2	7	1	2	11
0	Katrina Kennington	1	25	2	11	0.182	1	9	0.111	1	2	0.500	0	0	0.000	2	1	3	0	4	0	2	1	0	5
0	Allie Jenkins	0	0	0	0	0.000	0	0	0.000	0	0	0.000	0	0	0.000	0	0	0	0	0	0	0	0	0	0
0	Kaylee Kingston	1	28	4	9	0.444	4	9	0.444	0	0	0.000	0	0	0.000	2	4	6	0	2	1	2	4	0	8
0	Hayden Taylor	1	28	2	4	0.500	2	4	0.500	0	0	0.000	0	0	0.000	2	1	3	0	3	0	1	2	0	4
0	Nikki Spencer	1	4	0	1	0.000	0	1	0.000	0	0	0.000	0	0	0.000	1	0	1	0	0	0	0	0	0	0
0	Dannika Kingston	1	28	1	5	0.200	1	5	0.200	0	0	0.000	1	4	0.250	8	4	12	0	2	1	2	2	0	3
	TOTALS	1	28	14	54	0.259	12	48	0.250	2	6	0.333	1	4	0.250	19	15	34	0	13	4	14	10	2	31

