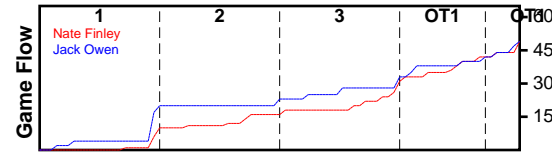


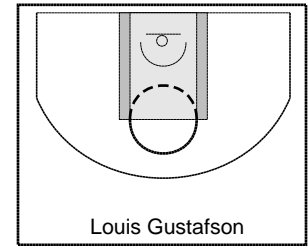
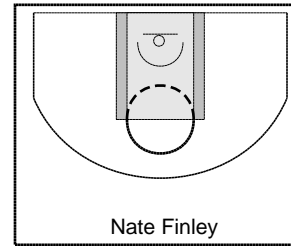
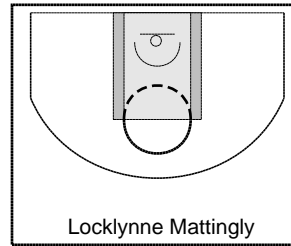
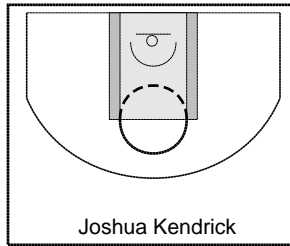
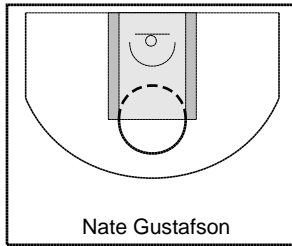
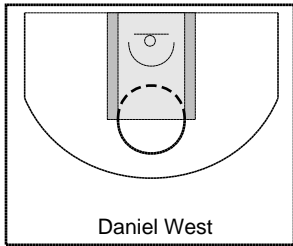
Nate Finley

9/30/24 Nate Finley at Jack Owen

	1	2	3	OT1	OT1	T
Nate Finley	8	8	15	2	7	56
Jack Owen	20	3	10	2	0	49



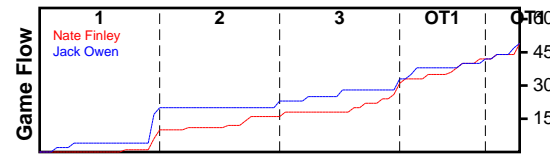
#	Name	G	MIN	FGM	FGA	FG%	2PM	2PA	2P%	3PM	3PA	3P%	FTM	FTA	FT%	OREB	DREB	REB	AST	STL	BLK	TO	PF	DEF	PTS
0	Daniel West	1	19	1	5	0.200	1	5	0.200	0	0	0.000	2	6	0.333	1	2	3	0	0	0	2	0	0	4
0	Nate Gustafson	1	23	12	29	0.414	12	27	0.444	0	2	0.000	3	9	0.333	12	3	15	1	10	0	4	4	3	27
0	Joshua Kendrick	1	4	2	4	0.500	2	4	0.500	0	0	0.000	0	0	0.000	2	1	3	0	0	0	1	0	0	4
0	Locklynne Mattingly	1	23	5	18	0.278	5	13	0.385	0	5	0.000	1	5	0.200	4	12	16	4	3	0	4	1	0	11
0	Nate Finley	1	23	3	6	0.500	3	4	0.750	0	2	0.000	4	6	0.667	0	5	5	2	5	0	9	5	0	10
0	Louis Gustafson	0	0	0	0	0.000	0	0	0.000	0	0	0.000	0	0	0.000	0	0	0	0	0	0	0	0	0	0
	TOTALS	1	28	23	62	0.371	23	53	0.434	0	9	0.000	10	26	0.385	19	23	42	7	18	0	20	10	3	56



Jack Owen

9/30/24 Nate Finley at Jack Owen

	1	2	3	OT1	OT1	T
Nate Finley	8	8	15	2	7	56
Jack Owen	20	3	10	2	0	49



#	Name	G	MIN	FGM	FGA	FG%	2PM	2PA	2P%	3PM	3PA	3P%	FTM	FTA	FT%	OREB	DREB	REB	AST	STL	BLK	TO	PF	DEF	PTS
0	William Keaton	1	17	7	18	0.389	5	11	0.455	2	7	0.286	4	8	0.500	3	7	10	3	4	1	8	5	0	20
0	Peter Martin	1	6	0	1	0.000	0	1	0.000	0	0	0.000	0	0	0.000	0	1	1	0	0	1	0	0	0	0
0	Nathan Stoddard	1	23	3	11	0.273	1	4	0.250	2	7	0.286	0	0	0.000	0	3	3	1	1	2	9	3	0	8
0	Jason Kendrick	1	23	3	12	0.250	2	8	0.250	1	4	0.250	2	4	0.500	2	4	6	1	7	1	9	4	0	9
0	Jack Owen	1	23	5	8	0.625	3	4	0.750	2	4	0.500	0	0	0.000	2	3	5	1	1	0	1	3	3	12
0	Cade Stoddard	0	0	0	0	0.000	0	0	0.000	0	0	0.000	0	0	0.000	0	0	0	0	0	0	0	0	0	0
	TOTALS	1	28	18	50	0.360	11	28	0.393	7	22	0.318	6	12	0.500	7	18	25	6	13	5	27	15	3	49

