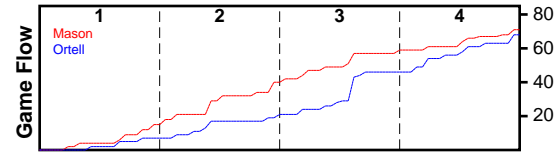


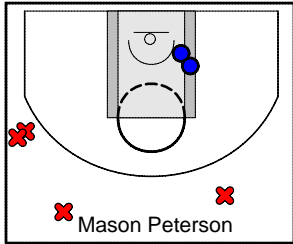
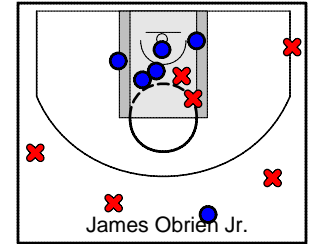
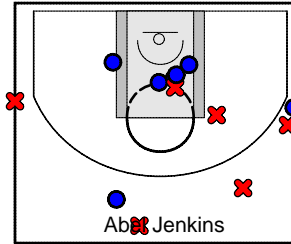
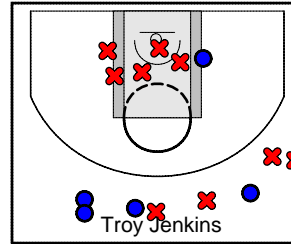
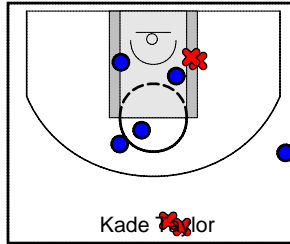
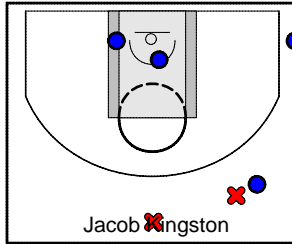
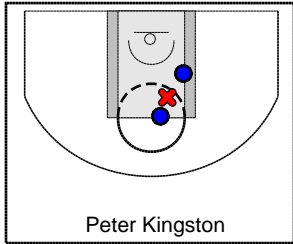
Mason

9/25/24 Mason at Ortell

	1	2	3	4	T
Mason	15	25	17	14	71
Ortell	7	12	27	22	68



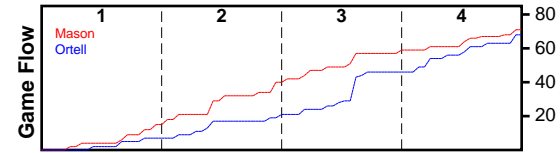
#	Name	G	MIN	FGM	FGA	FG%	2PM	2PA	2P%	3PM	3PA	3P%	FTM	FTA	FT%	OREB	DREB	REB	AST	STL	BLK	TO	PF	DEF	PTS
0	Peter Kingston	1	12	1	2	0.500	1	2	0.500	0	0	0.000	0	0	0.000	1	2	3	0	0	1	1	3	0	2
0	Jacob Kingston	1	18	5	7	0.714	2	2	1.000	3	5	0.600	0	1	0.000	0	4	4	2	2	0	2	3	0	13
0	Kade Taylor	1	28	4	10	0.400	3	7	0.429	1	3	0.333	0	0	0.000	4	7	11	3	1	1	1	3	0	9
0	Troy Jenkins	1	24	4	13	0.308	0	5	0.000	4	8	0.500	8	10	0.800	1	2	3	6	5	1	4	6	0	20
0	Abel Jenkins	1	28	6	12	0.500	4	6	0.667	2	6	0.333	0	2	0.000	2	3	5	1	0	1	2	4	0	14
0	James Obrien Jr.	1	21	5	12	0.417	4	7	0.571	1	5	0.200	0	0	0.000	2	0	2	1	1	1	0	1	0	11
0	Mason Peterson	1	11	0	4	0.000	0	0	0.000	0	4	0.000	2	4	0.500	0	4	4	2	0	2	0	2	0	2
	TOTALS	1	28	25	60	0.417	14	29	0.483	11	31	0.355	10	17	0.588	10	22	32	15	9	7	10	22	0	71



Ortell

9/25/24 Mason at Ortell

	1	2	3	4	T
Mason	15	25	17	14	71
Ortell	7	12	27	22	68



#	Name	G	MIN	FGM	FGA	FG%	2PM	2PA	2P%	3PM	3PA	3P%	FTM	FTA	FT%	OREB	DREB	REB	AST	STL	BLK	TO	PF	DEF	PTS
0	Phil Kingston	1	24	1	4	0.250	1	2	0.500	0	2	0.000	1	5	0.200	0	2	2	0	0	0	1	6	0	3
0	Garrison Kingston	1	28	9	23	0.391	8	14	0.571	1	9	0.111	7	9	0.778	2	4	6	4	1	1	4	4	0	26
0	Ortell Kingston	1	20	3	6	0.500	3	6	0.500	0	0	0.000	3	3	1.000	2	3	5	0	1	0	1	0	0	9
0	Alan Jenkins	1	15	2	4	0.500	2	4	0.500	0	0	0.000	0	0	0.000	4	5	9	0	1	0	3	1	0	4
0	James Stephens	1	28	9	18	0.500	7	14	0.500	2	4	0.500	3	6	0.500	3	5	8	4	3	1	2	2	0	23
0	Dallas Owen	1	19	1	6	0.167	0	2	0.000	1	4	0.250	0	0	0.000	0	1	1	0	0	1	2	1	0	3
0	Louis Owen	1	9	0	0	0.000	0	0	0.000	0	0	0.000	0	0	0.000	3	3	6	0	1	0	2	2	0	0
	TOTALS	1	28	25	61	0.410	21	42	0.500	4	19	0.211	14	23	0.609	14	23	37	8	7	3	15	16	0	68

