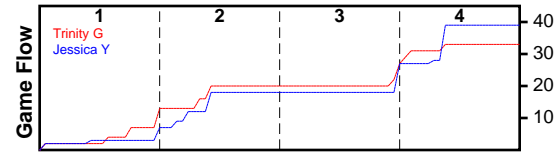


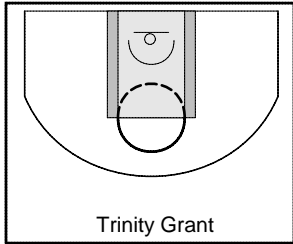
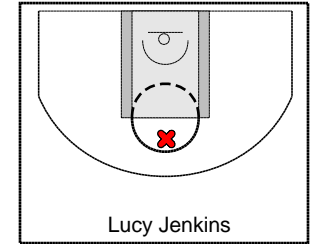
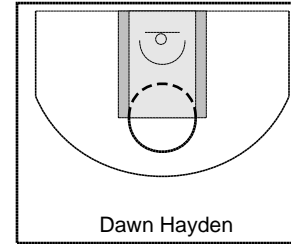
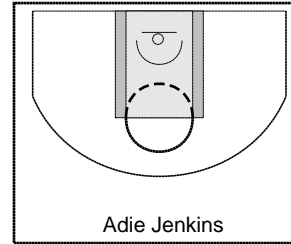
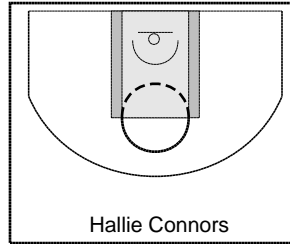
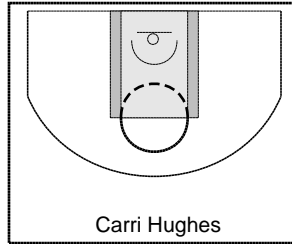
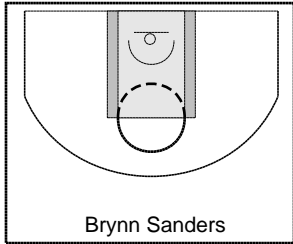
Trinity G

4/1/25 Trinity G at Jessica Y

	1	2	3	4	T
Trinity G	13	7	7	6	33
Jessica Y	7	11	9	12	39



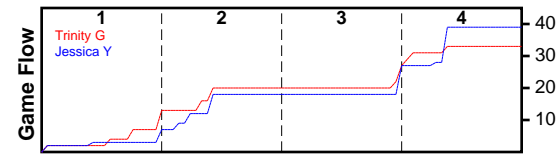
#	Name	G	MIN	FGM	FGA	FG%	2PM	2PA	2P%	3PM	3PA	3P%	FTM	FTA	FT%	OREB	DREB	REB	AST	STL	BLK	TO	PF	DEF	PTS
0	Brynn Sanders	1	28	0	2	0.000	0	2	0.000	0	0	0.000	0	0	0.000	3	8	11	0	0	1	4	2	0	0
0	Carri Hughes	1	28	4	15	0.267	4	15	0.267	0	0	0.000	0	0	0.000	0	8	8	0	0	0	3	3	0	8
0	Hallie Connors	1	21	1	8	0.125	0	7	0.000	1	1	1.000	0	0	0.000	1	1	2	0	0	0	3	0	0	3
0	Adie Jenkins	1	28	4	7	0.571	1	3	0.333	3	4	0.750	2	2	1.000	1	10	11	0	0	1	3	5	0	13
0	Dawn Hayden	0	0	0	0	0.000	0	0	0.000	0	0	0.000	0	0	0.000	0	0	0	0	0	0	0	0	0	0
0	Lucy Jenkins	1	11	3	7	0.429	3	5	0.600	0	2	0.000	0	0	0.000	2	1	3	0	0	0	4	0	0	6
0	Trinity Grant	1	25	1	5	0.200	1	3	0.333	0	2	0.000	1	2	0.500	1	2	3	0	0	0	1	2	0	3
	TOTALS	1	28	13	44	0.295	9	35	0.257	4	9	0.444	3	4	0.750	8	30	38	0	0	2	18	12	0	33



Jessica Y

4/1/25 Trinity G at Jessica Y

	1	2	3	4	T
Trinity G	13	7	7	6	33
Jessica Y	7	11	9	12	39



#	Name	G	MIN	FGM	FGA	FG%	2PM	2PA	2P%	3PM	3PA	3P%	FTM	FTA	FT%	OREB	DREB	REB	AST	STL	BLK	TO	PF	DEF	PTS
0	Angela Walton	1	26	0	3	0.000	0	2	0.000	0	1	0.000	0	0	0.000	3	2	5	0	0	0	0	2	0	0
0	Jessica Young	1	25	3	8	0.375	3	8	0.375	0	0	0.000	1	2	0.500	6	8	14	0	0	0	1	3	0	7
0	Kaylee Kingston	1	21	4	22	0.182	4	21	0.190	0	1	0.000	0	4	0.000	5	2	7	0	0	0	0	0	0	8
0	Janie Hughston	1	28	6	22	0.273	4	17	0.235	2	5	0.400	1	2	0.500	3	2	5	0	0	1	1	0	0	15
0	Krystal Kingston	1	13	0	0	0.000	0	0	0.000	0	0	0.000	0	0	0.000	1	2	3	0	0	0	0	0	0	0
0	Elly Stephens	0	0	0	0	0.000	0	0	0.000	0	0	0.000	0	0	0.000	0	0	0	0	0	0	0	0	0	0
0	Adriauna Gustafson	1	28	1	10	0.100	1	9	0.111	0	1	0.000	7	10	0.700	2	4	6	0	0	0	4	0	0	9
	TOTALS	1	28	14	65	0.215	12	57	0.211	2	8	0.250	9	18	0.500	20	20	40	0	0	1	6	5	0	39

