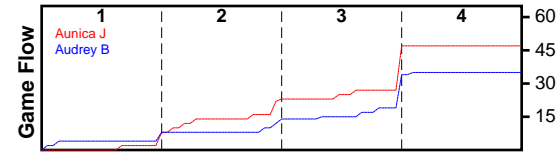


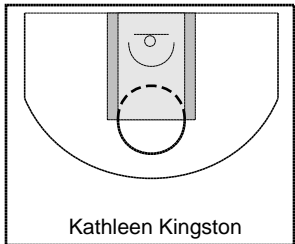
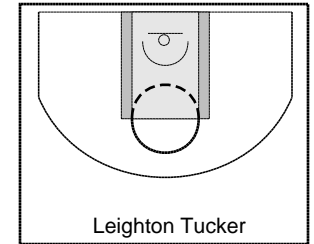
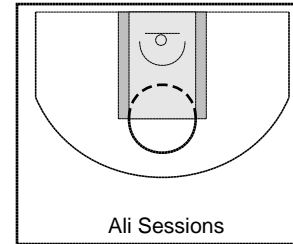
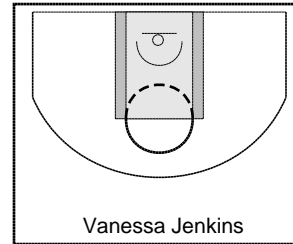
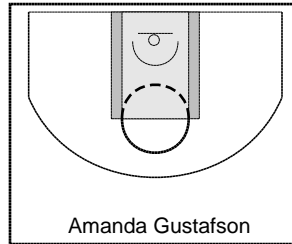
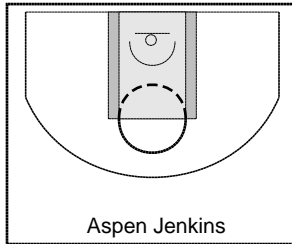
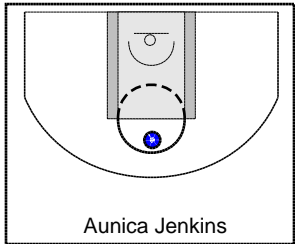
Aunica J

3/18/25 Aunica J at Audrey B

	1	2	3	4	T
Aunica J	6	17	24	0	47
Audrey B	8	4	22	1	35



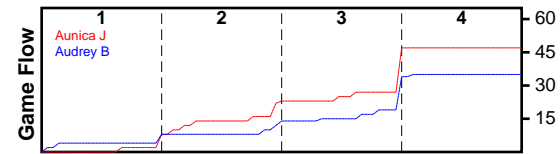
#	Name	G	MIN	FGM	FGA	FG%	2PM	2PA	2P%	3PM	3PA	3P%	FTM	FTA	FT%	OREB	DREB	REB	AST	STL	BLK	TO	PF	DEF	PTS
0	Aunica Jenkins	1	28	12	22	0.545	12	21	0.571	0	1	0.000	1	7	0.143	13	6	19	0	4	1	5	2	0	25
0	Aspen Jenkins	1	24	0	4	0.000	0	4	0.000	0	0	0.000	0	0	0.000	2	1	3	0	1	1	6	1	0	0
0	Amanda Gustafson	1	22	3	10	0.300	3	9	0.333	0	1	0.000	0	0	0.000	2	3	5	0	5	1	10	4	0	6
0	Vanessa Jenkins	1	1	0	0	0.000	0	0	0.000	0	0	0.000	0	0	0.000	0	2	2	0	0	0	1	0	0	0
0	Ali Sessions	1	21	5	14	0.357	5	14	0.357	0	0	0.000	0	0	0.000	2	1	3	0	3	0	7	3	0	10
0	Leighton Tucker	1	18	0	1	0.000	0	1	0.000	0	0	0.000	0	0	0.000	1	0	1	0	3	0	2	1	0	0
0	Kathleen Kingston	1	28	3	11	0.273	3	11	0.273	0	0	0.000	0	0	0.000	6	11	17	0	4	1	6	2	0	6
	TOTALS	1	28	23	62	0.371	23	60	0.383	0	2	0.000	1	7	0.143	26	24	50	0	20	4	37	13	0	47



Audrey B

3/18/25 Aunica J at Audrey B

	1	2	3	4	T
Aunica J	6	17	24	0	47
Audrey B	8	4	22	1	35



#	Name	G	MIN	FGM	FGA	FG%	2PM	2PA	2P%	3PM	3PA	3P%	FTM	FTA	FT%	OREB	DREB	REB	AST	STL	BLK	TO	PF	DEF	PTS
0	Allie Jenkins	1	28	7	20	0.350	7	18	0.389	0	2	0.000	1	2	0.500	5	5	10	0	4	0	10	1	0	15
0	Jordyn Jenkins	1	28	6	23	0.261	4	20	0.200	2	3	0.667	1	5	0.200	8	3	11	0	6	0	14	1	0	15
0	Hayden Taylor	1	28	1	5	0.200	1	5	0.200	0	0	0.000	0	0	0.000	5	1	6	0	6	1	5	3	0	2
0	Cambri Taylor	1	21	0	5	0.000	0	5	0.000	0	0	0.000	0	0	0.000	3	3	6	0	1	1	4	0	0	0
0	Talliena Kingston	1	28	1	7	0.143	1	7	0.143	0	0	0.000	1	2	0.500	3	4	7	0	3	1	6	0	0	3
0	Aly Kingston	1	7	0	1	0.000	0	1	0.000	0	0	0.000	0	0	0.000	0	0	0	0	0	0	0	1	0	0
	TOTALS	1	28	15	61	0.246	13	56	0.232	2	5	0.400	3	9	0.333	24	16	40	0	20	3	39	6	0	35

