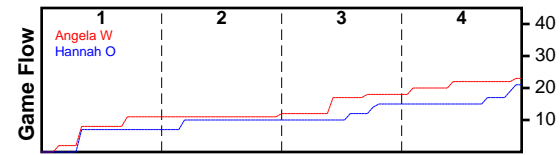


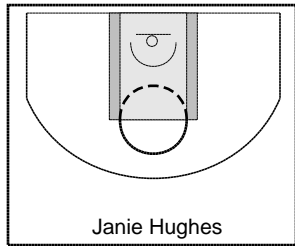
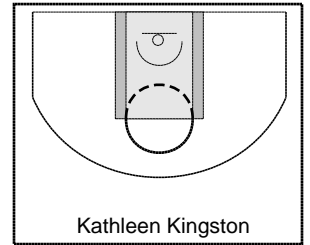
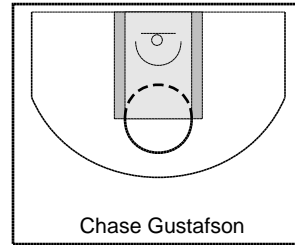
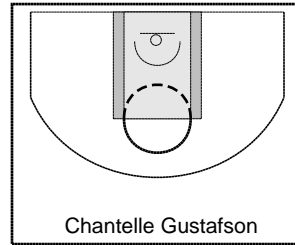
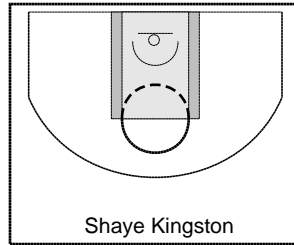
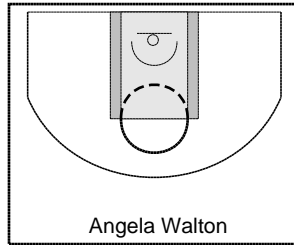
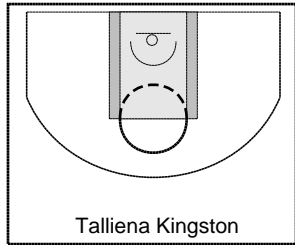
Angela W

2/5/24 Angela W at Hannah O

	1	2	3	4	T
Angela W	11	1	6	5	23
Hannah O	7	3	5	6	21



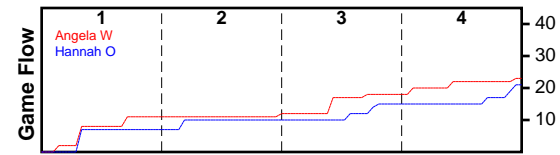
#	Name	G	MIN	FGM	FGA	FG%	2PM	2PA	2P%	3PM	3PA	3P%	FTM	FTA	FT%	OREB	DREB	REB	AST	STL	BLK	TO	PF	DEF	PTS
105	Talliena Kingston	1	28	0	4	0.000	0	4	0.000	0	0	0.000	0	0	0.000	0	0	0	0	0	0	2	0	0	0
0	Angela Walton	1	28	0	5	0.000	0	5	0.000	0	0	0.000	1	2	0.500	7	2	9	0	0	0	2	2	0	1
0	Shaye Kingston	1	12	1	6	0.167	1	5	0.200	0	1	0.000	1	2	0.500	2	1	3	0	0	0	1	0	0	3
272	Chantelle Gustafson	1	26	3	9	0.333	3	9	0.333	0	0	0.000	1	5	0.200	3	8	11	0	0	0	4	1	0	7
0	Chase Gustafson	1	10	0	0	0.000	0	0	0.000	0	0	0.000	0	0	0.000	1	0	1	0	0	0	1	2	0	0
0	Kathleen Kingston	1	16	1	5	0.200	1	4	0.250	0	1	0.000	1	2	0.500	1	2	3	0	1	0	2	0	0	3
97	Janie Hughes	1	22	4	21	0.190	3	15	0.200	1	6	0.167	0	0	0.000	0	6	6	0	0	2	1	0	0	9
TOTALS		1	28	9	50	0.180	8	42	0.190	1	8	0.125	4	11	0.364	14	19	33	0	1	2	13	5	0	23



Hannah O

2/5/24 Angela W at Hannah O

	1	2	3	4	T
Angela W	11	1	6	5	23
Hannah O	7	3	5	6	21



#	Name	G	MIN	FGM	FGA	FG%	2PM	2PA	2P%	3PM	3PA	3P%	FTM	FTA	FT%	OREB	DREB	REB	AST	STL	BLK	TO	PF	DEF	PTS
158	Mikki Crandal	1	18	0	2	0.000	0	2	0.000	0	0	0.000	0	0	0.000	2	4	6	0	0	0	1	2	0	0
181	Hannah Owen	1	11	0	3	0.000	0	3	0.000	0	0	0.000	0	0	0.000	1	2	3	0	0	0	0	1	0	0
96	Shirley Stoddard	1	28	1	7	0.143	1	5	0.200	0	2	0.000	0	2	0.000	5	3	8	0	0	0	0	4	0	2
135	Naonna O'brien	1	28	3	19	0.158	2	17	0.118	1	2	0.500	1	1	1.000	2	10	12	0	0	0	3	2	0	8
73	Minnie Weaver	1	28	3	12	0.250	3	11	0.273	0	1	0.000	0	0	0.000	4	3	7	0	0	0	5	3	0	6
0	Amanda Gustafson	1	28	2	6	0.333	2	5	0.400	0	1	0.000	1	2	0.500	3	2	5	0	0	0	2	3	0	5
90	Lucy Jenkins	0	0	0	0	0.000	0	0	0.000	0	0	0.000	0	0	0.000	0	0	0	0	0	0	0	0	0	0
TOTALS		1	28	9	49	0.184	8	43	0.186	1	6	0.167	2	5	0.400	17	24	41	0	0	0	11	15	0	21

