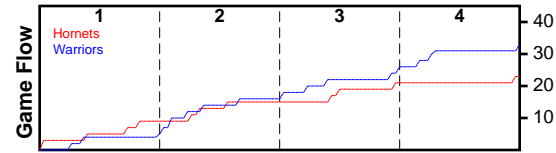


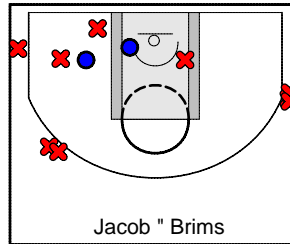
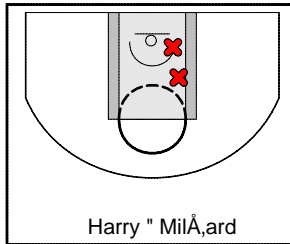
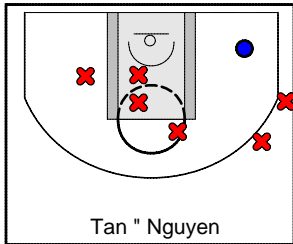
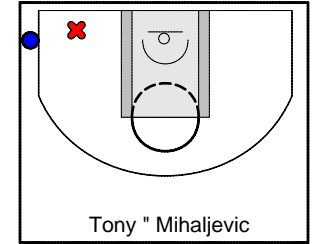
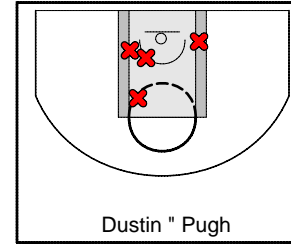
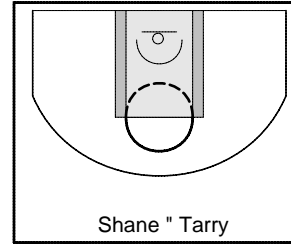
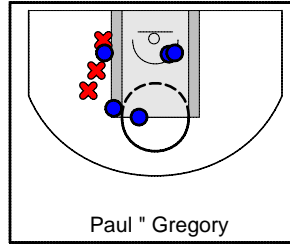
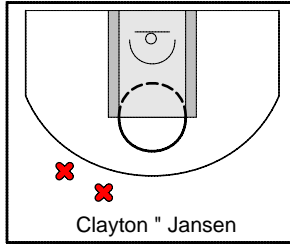
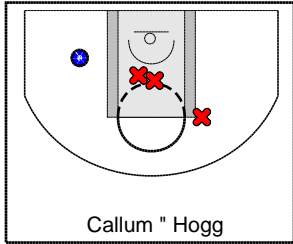
Hornets

(Filcom Rd1) 2/11/17 Hornets at Warriors

	1	2	3	4	T
Hornets	9	6	6	2	23
Warriors	5	11	8	9	33



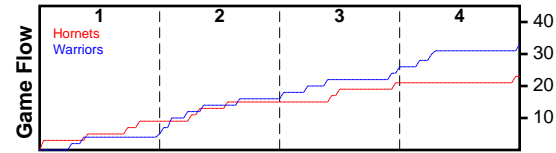
#	Name	G	MIN	FGM	FGA	FG%	2PM	2PA	2P%	3PM	3PA	3P%	FTM	FTA	FT%	OREB	DREB	REB	AST	STL	BLK	TO	PF	DEF	PTS
33	Callum " Hogg	1	24	1	4	0.250	1	4	0.250	0	0	0.000	0	0	0.000	3	0	3	0	0	0	0	0	1	2
7	Clayton " Jansen	1	20	0	4	0.000	0	2	0.000	0	2	0.000	2	4	0.500	0	3	3	0	0	0	2	0	1	2
11	Paul " Gregory	1	34	5	10	0.500	5	10	0.500	0	0	0.000	0	1	0.000	3	7	10	1	0	0	0	2	1	10
5	Shane " Tarry	1	20	0	0	0.000	0	0	0.000	0	0	0.000	0	0	0.000	0	1	1	1	2	0	1	1	0	0
22	Dustin " Pugh	1	28	0	8	0.000	0	8	0.000	0	0	0.000	0	2	0.000	4	2	6	0	0	0	2	1	0	0
23	Tony " Mihaljevic	1	15	1	2	0.500	0	1	0.000	1	1	1.000	0	0	0.000	1	0	1	0	0	0	3	3	0	3
2	Tan " Nguyen	1	21	1	7	0.143	1	5	0.200	0	2	0.000	0	0	0.000	2	1	3	2	2	0	1	1	1	2
24	Harry " MilÅ,ard	1	21	0	4	0.000	0	4	0.000	0	0	0.000	0	0	0.000	3	2	5	0	0	0	2	0	2	0
8	Jacob " Brims	1	23	2	11	0.182	2	5	0.400	0	6	0.000	0	0	0.000	1	4	5	0	1	0	3	0	0	4
TOTALS		1	40	10	50	0.200	9	39	0.231	1	11	0.091	2	7	0.286	17	20	37	4	5	0	14	8	6	23



Warriors

(Filcom Rd1) 2/11/17 Hornets at Warriors

	1	2	3	4	T
Hornets	9	6	6	2	23
Warriors	5	11	8	9	33



#	Name	G	MIN	FGM	FGA	FG%	2PM	2PA	2P%	3PM	3PA	3P%	FTM	FTA	FT%	OREB	DREB	REB	AST	STL	BLK	TO	PF	DEF	PTS
30	Steven " Favell	1	31	6	16	0.375	6	16	0.375	0	0	0.000	1	2	0.500	7	6	13	2	0	2	3	5	1	13
7	Steven " Barclay	0	0	0	0	0.000	0	0	0.000	0	0	0.000	0	0	0.000	0	0	0	0	0	0	0	0	0	0
20	Phil " Fraser	1	35	3	7	0.429	2	4	0.500	1	3	0.333	0	0	0.000	1	3	4	1	3	0	1	0	0	7
45	Cameron " Lamont	1	36	2	4	0.500	2	3	0.667	0	1	0.000	1	2	0.500	0	2	2	0	4	0	2	1	0	5
2	Cameron " Bucknell	1	30	0	7	0.000	0	6	0.000	0	1	0.000	0	2	0.000	2	3	5	3	2	0	1	0	1	0
11	Edward " Craft	1	36	2	5	0.400	2	5	0.400	0	0	0.000	0	0	0.000	1	2	3	1	0	3	2	1	0	4
12	Joshua " Barclay	1	35	2	10	0.200	2	8	0.250	0	2	0.000	0	2	0.000	3	6	9	2	2	5	3	2	1	4
TOTALS		1	40	15	49	0.306	14	42	0.333	1	7	0.143	2	8	0.250	14	22	36	9	11	10	12	9	3	33

