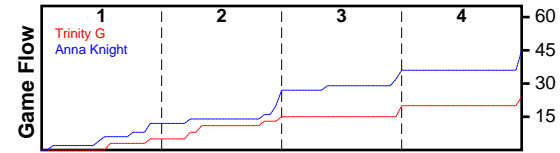


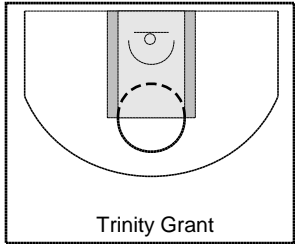
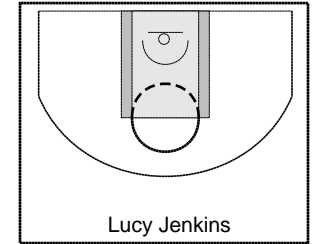
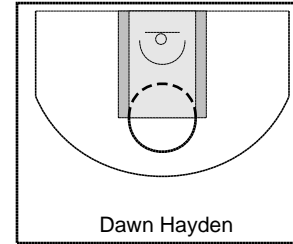
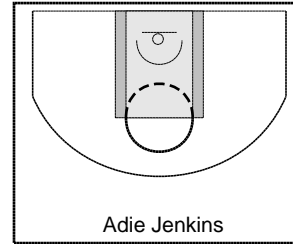
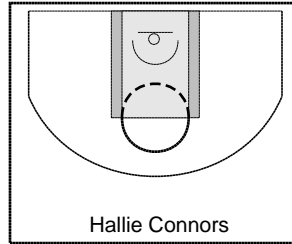
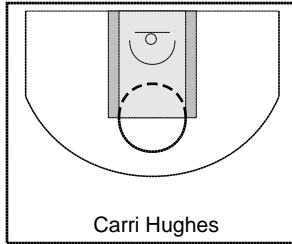
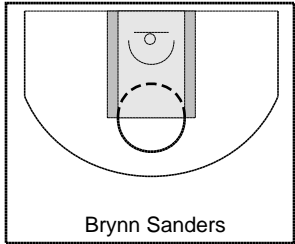
Trinity G

2/25/25 Trinity G at Anna Knight

	1	2	3	4	T
Trinity G	5	10	5	4	24
Anna Knight	12	15	9	9	45



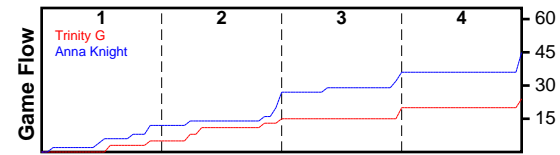
#	Name	G	MIN	FGM	FGA	FG%	2PM	2PA	2P%	3PM	3PA	3P%	FTM	FTA	FT%	OREB	DREB	REB	AST	STL	BLK	TO	PF	DEF	PTS
0	Brynn Sanders	1	13	0	1	0.000	0	1	0.000	0	0	0.000	0	0	0.000	3	4	7	0	0	0	3	1	0	0
0	Carri Hughes	1	28	1	9	0.111	1	9	0.111	0	0	0.000	0	0	0.000	3	7	10	0	1	0	7	3	0	2
0	Hallie Connors	1	20	1	4	0.250	1	4	0.250	0	0	0.000	0	0	0.000	2	2	4	0	0	0	3	0	0	2
0	Adie Jenkins	1	28	5	20	0.250	1	3	0.333	4	17	0.235	0	0	0.000	1	3	4	0	2	0	12	2	0	14
0	Dawn Hayden	1	17	1	7	0.143	1	7	0.143	0	0	0.000	0	0	0.000	3	2	5	0	1	0	2	0	0	2
0	Lucy Jenkins	1	9	1	5	0.200	1	5	0.200	0	0	0.000	0	0	0.000	1	0	1	0	0	0	2	0	0	2
0	Trinity Grant	1	28	1	1	1.000	1	1	1.000	0	0	0.000	0	0	0.000	0	1	1	0	0	0	2	1	0	2
	TOTALS	1	28	10	47	0.213	6	30	0.200	4	17	0.235	0	0	0.000	13	19	32	0	4	0	31	7	0	24



Anna Knight

2/25/25 Trinity G at Anna Knight

	1	2	3	4	T
Trinity G	5	10	5	4	24
Anna Knight	12	15	9	9	45



#	Name	G	MIN	FGM	FGA	FG%	2PM	2PA	2P%	3PM	3PA	3P%	FTM	FTA	FT%	OREB	DREB	REB	AST	STL	BLK	TO	PF	DEF	PTS
0	Megan Young	1	28	9	12	0.750	9	12	0.750	0	0	0.000	2	5	0.400	8	10	18	0	3	1	11	1	0	20
0	Shaye Kingston	1	3	0	2	0.000	0	1	0.000	0	1	0.000	0	2	0.000	0	0	0	0	0	0	3	3	0	0
0	Levonica Stubbs	1	26	2	6	0.333	2	6	0.333	0	0	0.000	0	0	0.000	0	0	0	0	2	0	0	0	0	4
0	Naconna O'Brien	1	28	4	15	0.267	4	12	0.333	0	3	0.000	0	0	0.000	4	3	7	0	5	2	2	0	0	8
0	Anna Knight	1	28	5	22	0.227	4	8	0.500	1	14	0.071	0	0	0.000	4	8	12	0	4	0	9	1	0	11
0	Arized Gustafson	1	3	0	4	0.000	0	1	0.000	0	3	0.000	0	0	0.000	0	0	0	0	0	0	0	0	0	0
0	Elizabeth Hull	1	26	1	1	1.000	1	1	1.000	0	0	0.000	0	0	0.000	5	0	5	0	0	0	1	0	0	2
	TOTALS	1	28	21	62	0.339	20	41	0.488	1	21	0.048	2	7	0.286	21	21	42	0	14	3	26	5	0	45

