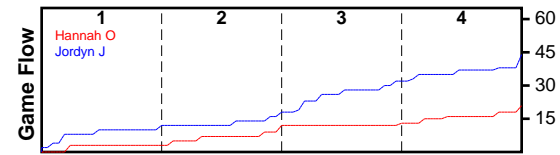


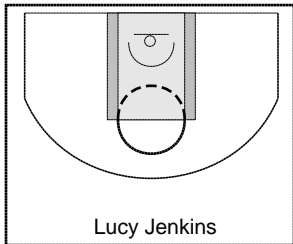
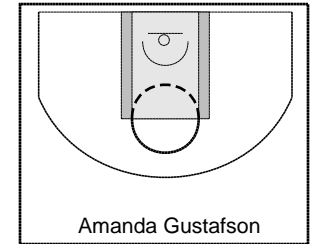
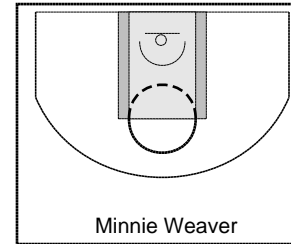
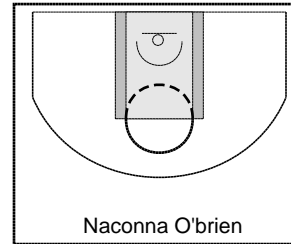
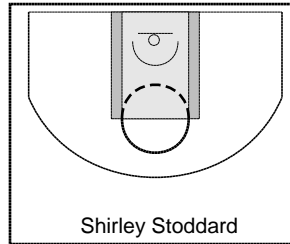
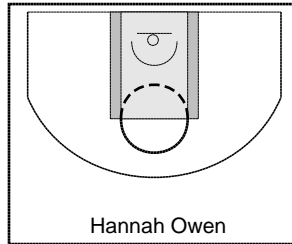
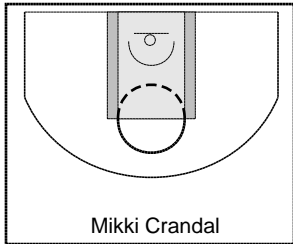
Hannah O

1/8/24 Hannah O at Jordyn J

	1	2	3	4	T
Hannah O	3	9	0	9	21
Jordyn J	10	8	14	12	44



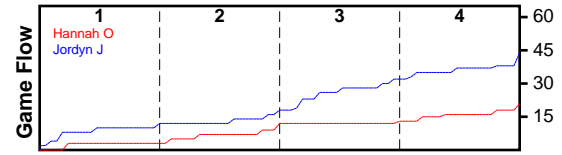
#	Name	G	MIN	FGM	FGA	FG%	2PM	2PA	2P%	3PM	3PA	3P%	FTM	FTA	FT%	OREB	DREB	REB	AST	STL	BLK	TO	PF	DEF	PTS
158	Mikki Crandal	1	14	0	1	0.000	0	1	0.000	0	0	0.000	0	0	0.000	2	0	2	0	2	0	2	0	0	0
181	Hannah Owen	1	14	0	0	0.000	0	0	0.000	0	0	0.000	0	0	0.000	0	1	1	0	0	0	0	1	0	0
96	Shirley Stoddard	1	28	0	0	0.000	0	0	0.000	0	0	0.000	0	0	0.000	1	1	2	0	3	0	4	1	0	0
135	Naonna O'brien	1	28	1	13	0.077	1	6	0.167	0	7	0.000	1	2	0.500	0	2	2	0	1	0	16	2	0	3
73	Minnie Weaver	0	0	0	0	0.000	0	0	0.000	0	0	0.000	0	0	0.000	0	0	0	0	0	0	0	0	0	0
0	Amanda Gustafson	1	28	3	9	0.333	3	9	0.333	0	0	0.000	4	8	0.500	5	3	8	0	4	0	4	2	0	10
90	Lucy Jenkins	1	28	3	15	0.200	2	10	0.200	1	5	0.200	1	3	0.333	2	1	3	0	2	0	6	1	0	8
TOTALS		1	28	7	38	0.184	6	26	0.231	1	12	0.083	6	13	0.462	10	8	18	0	12	0	32	7	0	21



Jordyn J

1/8/24 Hannah O at Jordyn J

	1	2	3	4	T
Hannah O	3	9	0	9	21
Jordyn J	10	8	14	12	44



#	Name	G	MIN	FGM	FGA	FG%	2PM	2PA	2P%	3PM	3PA	3P%	FTM	FTA	FT%	OREB	DREB	REB	AST	STL	BLK	TO	PF	DEF	PTS
0	Jordyn Jenkins	1	28	12	25	0.480	11	19	0.579	1	6	0.167	2	5	0.400	2	3	5	0	5	1	14	4	0	27
0	Katrina Kennington	1	21	1	5	0.200	1	3	0.333	0	2	0.000	0	0	0.000	1	2	3	0	3	0	2	0	0	2
0	Allie Jenkins	0	0	0	0	0.000	0	0	0.000	0	0	0.000	0	0	0.000	0	0	0	0	0	0	0	0	0	0
0	Kaylee Kingston	1	22	4	6	0.667	4	6	0.667	0	0	0.000	0	0	0.000	1	3	4	0	2	0	5	1	0	8
0	Hayden Taylor	1	28	0	3	0.000	0	3	0.000	0	0	0.000	0	0	0.000	4	1	5	0	5	0	4	1	0	0
0	Nikki Spencer	1	20	2	2	1.000	2	2	1.000	0	0	0.000	1	4	0.250	3	0	3	0	0	0	1	4	0	5
0	Dannika Kingston	1	21	1	2	0.500	1	2	0.500	0	0	0.000	0	2	0.000	1	4	5	0	1	0	0	1	0	2
	TOTALS	1	28	20	43	0.465	19	35	0.543	1	8	0.125	3	11	0.273	12	13	25	0	16	1	26	11	0	44

