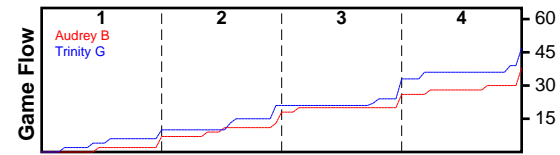


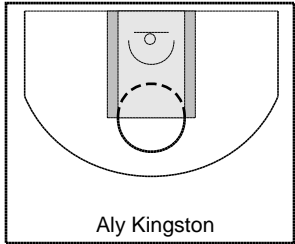
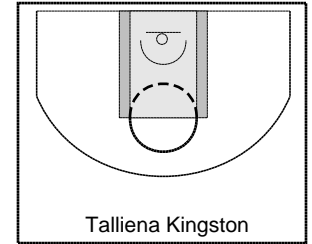
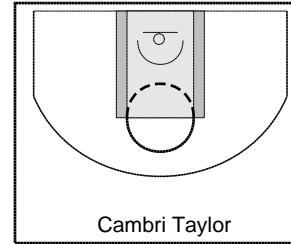
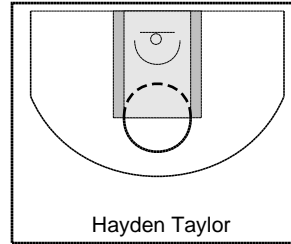
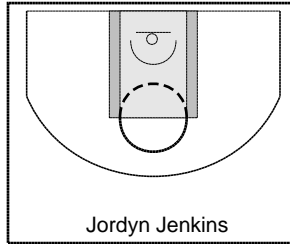
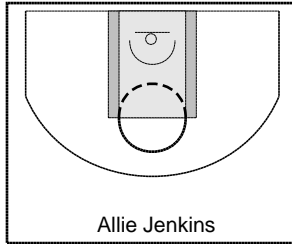
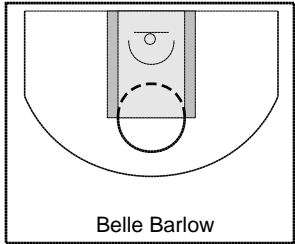
Audrey B

2/18/25 Audrey B at Trinity G

	1	2	3	4	T
Audrey B	7	11	8	12	38
Trinity G	10	11	12	14	47



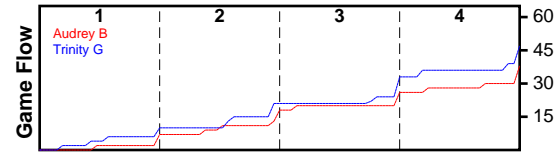
#	Name	G	MIN	FGM	FGA	FG%	2PM	2PA	2P%	3PM	3PA	3P%	FTM	FTA	FT%	OREB	DREB	REB	AST	STL	BLK	TO	PF	DEF	PTS
0	Belle Barlow	1	24	1	9	0.111	0	0	0.000	1	9	0.111	0	0	0.000	0	1	1	0	2	0	0	1	0	3
0	Allie Jenkins	1	18	2	10	0.200	0	5	0.000	2	5	0.400	0	0	0.000	11	10	21	0	2	0	8	0	0	6
0	Jordyn Jenkins	1	28	8	33	0.242	7	25	0.280	1	8	0.125	3	4	0.750	3	6	9	0	1	0	3	2	0	20
0	Hayden Taylor	1	21	1	3	0.333	1	3	0.333	0	0	0.000	0	0	0.000	3	3	6	0	3	0	2	2	0	2
0	Cambri Taylor	1	12	1	3	0.333	1	3	0.333	0	0	0.000	0	0	0.000	5	0	5	0	0	0	1	2	0	2
0	Talliena Kingston	1	28	2	11	0.182	2	11	0.182	0	0	0.000	1	3	0.333	5	1	6	0	3	0	8	1	0	5
0	Aly Kingston	1	11	0	3	0.000	0	3	0.000	0	0	0.000	0	0	0.000	0	0	0	0	2	0	5	0	0	0
	TOTALS	1	28	15	72	0.208	11	50	0.220	4	22	0.182	4	7	0.571	27	21	48	0	13	0	27	8	0	38



Trinity G

2/18/25 Audrey B at Trinity G

	1	2	3	4	T
Audrey B	7	11	8	12	38
Trinity G	10	11	12	14	47



#	Name	G	MIN	FGM	FGA	FG%	2PM	2PA	2P%	3PM	3PA	3P%	FTM	FTA	FT%	OREB	DREB	REB	AST	STL	BLK	TO	PF	DEF	PTS
0	Brynn Sanders	0	0	0	0	0.000	0	0	0.000	0	0	0.000	0	0	0.000	0	0	0	0	0	0	0	0	0	0
0	Carri Hughes	1	21	3	11	0.273	3	11	0.273	0	0	0.000	2	4	0.500	3	8	11	0	1	0	2	5	0	8
0	Hallie Connors	1	14	1	4	0.250	1	4	0.250	0	0	0.000	0	0	0.000	1	1	2	0	2	0	4	4	0	2
0	Adie Jenkins	1	28	11	19	0.579	7	9	0.778	4	10	0.400	3	3	1.000	0	6	6	0	7	0	7	3	0	29
0	Dawn Hayden	1	28	0	6	0.000	0	6	0.000	0	0	0.000	1	2	0.500	6	7	13	0	0	0	3	1	0	1
0	Lucy Jenkins	1	21	3	9	0.333	2	5	0.400	1	4	0.250	0	0	0.000	2	0	2	0	1	0	2	1	0	7
0	Trinity Grant	1	28	0	7	0.000	0	7	0.000	0	0	0.000	0	0	0.000	2	3	5	0	1	0	5	1	0	0
	TOTALS	1	28	18	56	0.321	13	42	0.310	5	14	0.357	6	9	0.667	14	25	39	0	12	0	23	15	0	47

