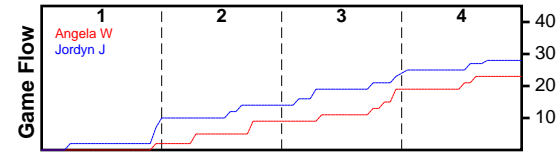


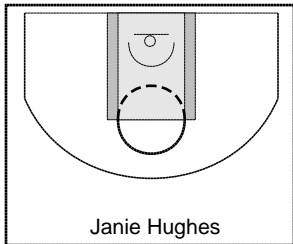
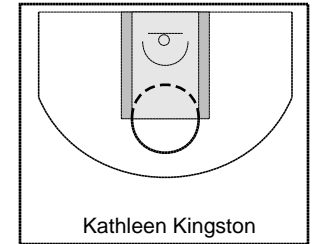
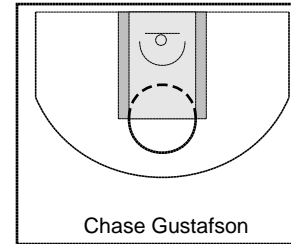
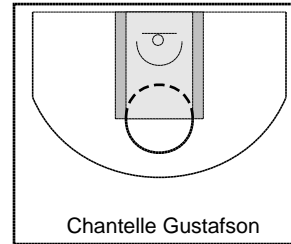
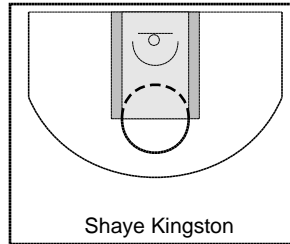
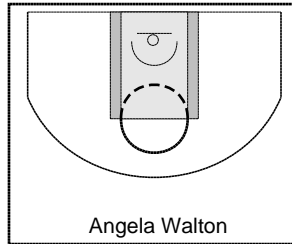
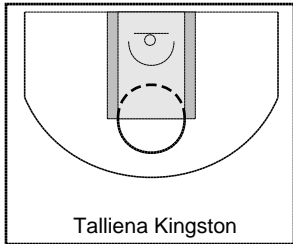
Angela W

1/15/24 Angela W at Jordyn J

	1	2	3	4	T
Angela W	2	7	10	4	23
Jordyn J	8	6	10	4	28



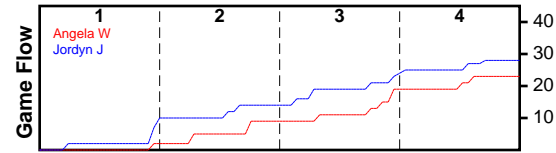
#	Name	G	MIN	FGM	FGA	FG%	2PM	2PA	2P%	3PM	3PA	3P%	FTM	FTA	FT%	OREB	DREB	REB	AST	STL	BLK	TO	PF	DEF	PTS
105	Talliena Kingston	1	27	4	7	0.571	4	7	0.571	0	0	0.000	0	0	0.000	1	2	3	0	1	0	2	0	0	8
0	Angela Walton	1	25	2	6	0.333	1	1	1.000	1	5	0.200	0	0	0.000	1	0	1	0	0	0	0	2	0	5
0	Shaye Kingston	1	5	0	8	0.000	0	6	0.000	0	2	0.000	0	0	0.000	0	2	2	0	1	0	1	0	0	0
272	Chantelle Gustafson	1	27	2	8	0.250	2	5	0.400	0	3	0.000	0	0	0.000	1	4	5	0	0	0	1	2	0	4
0	Chase Gustafson	1	11	0	0	0.000	0	0	0.000	0	0	0.000	0	0	0.000	0	1	1	0	0	0	0	0	0	0
0	Kathleen Kingston	1	13	0	1	0.000	0	1	0.000	0	0	0.000	0	2	0.000	0	0	0	0	0	0	0	0	0	0
97	Janie Hughes	1	27	3	21	0.143	3	20	0.150	0	1	0.000	0	4	0.000	7	10	17	0	0	0	2	1	0	6
	TOTALS	1	28	11	51	0.216	10	40	0.250	1	11	0.091	0	6	0.000	10	19	29	0	2	0	6	5	0	23



Jordyn J

1/15/24 Angela W at Jordyn J

	1	2	3	4	T
Angela W	2	7	10	4	23
Jordyn J	8	6	10	4	28



#	Name	G	MIN	FGM	FGA	FG%	2PM	2PA	2P%	3PM	3PA	3P%	FTM	FTA	FT%	OREB	DREB	REB	AST	STL	BLK	TO	PF	DEF	PTS
0	Jordyn Jenkins	1	27	4	21	0.190	3	16	0.188	1	5	0.200	2	6	0.333	4	6	10	0	1	0	1	0	2	11
0	Katrina Kennington	1	27	1	6	0.167	0	5	0.000	1	1	1.000	1	2	0.500	1	5	6	0	2	0	2	1	0	4
0	Allie Jenkins	0	0	0	0	0.000	0	0	0.000	0	0	0.000	0	0	0.000	0	0	0	0	0	0	0	0	0	0
0	Kaylee Kingston	1	27	1	10	0.100	1	9	0.111	0	1	0.000	0	2	0.000	4	3	7	0	0	0	3	3	0	2
0	Hayden Taylor	1	27	0	1	0.000	0	1	0.000	0	0	0.000	0	0	0.000	3	3	6	0	0	0	0	1	0	0
0	Nikki Spencer	1	2	0	0	0.000	0	0	0.000	0	0	0.000	0	0	0.000	0	0	0	0	0	0	0	0	0	0
0	Dannika Kingston	1	25	5	8	0.625	5	8	0.625	0	0	0.000	1	2	0.500	2	6	8	0	1	0	0	0	0	11
	TOTALS	1	28	11	46	0.239	9	39	0.231	2	7	0.286	4	12	0.333	14	23	37	0	4	0	6	5	2	28

